

# ROADX



ROADX PASSENGER & LIGHT TRUCK TYRES CATALOGUE



**ROADX**  
TYRE

WEST HAM UNITED GLOBAL TYRE PARTNER

PASSENGER & LIGHT TRUCK TYRES CATALOGUE V20/01

## RXMOTION

H11	P6	HP
H12	P8	HP
U11	P10	UHP
U11 RFT / H12 RFT	P14	RUN-FLAT
4S	P16	ALL-WEATHER

## RXQUEST

SU01	P18	SUV-UHP
SU01 RFT	P14	SUV-RUNFLAT
H/T01	P20	SUV-HT
H/T02	P22	SUV-HT
A/T	P24	SUV-AT
M/T	P26	SUV-MT
C02	P28	VAN

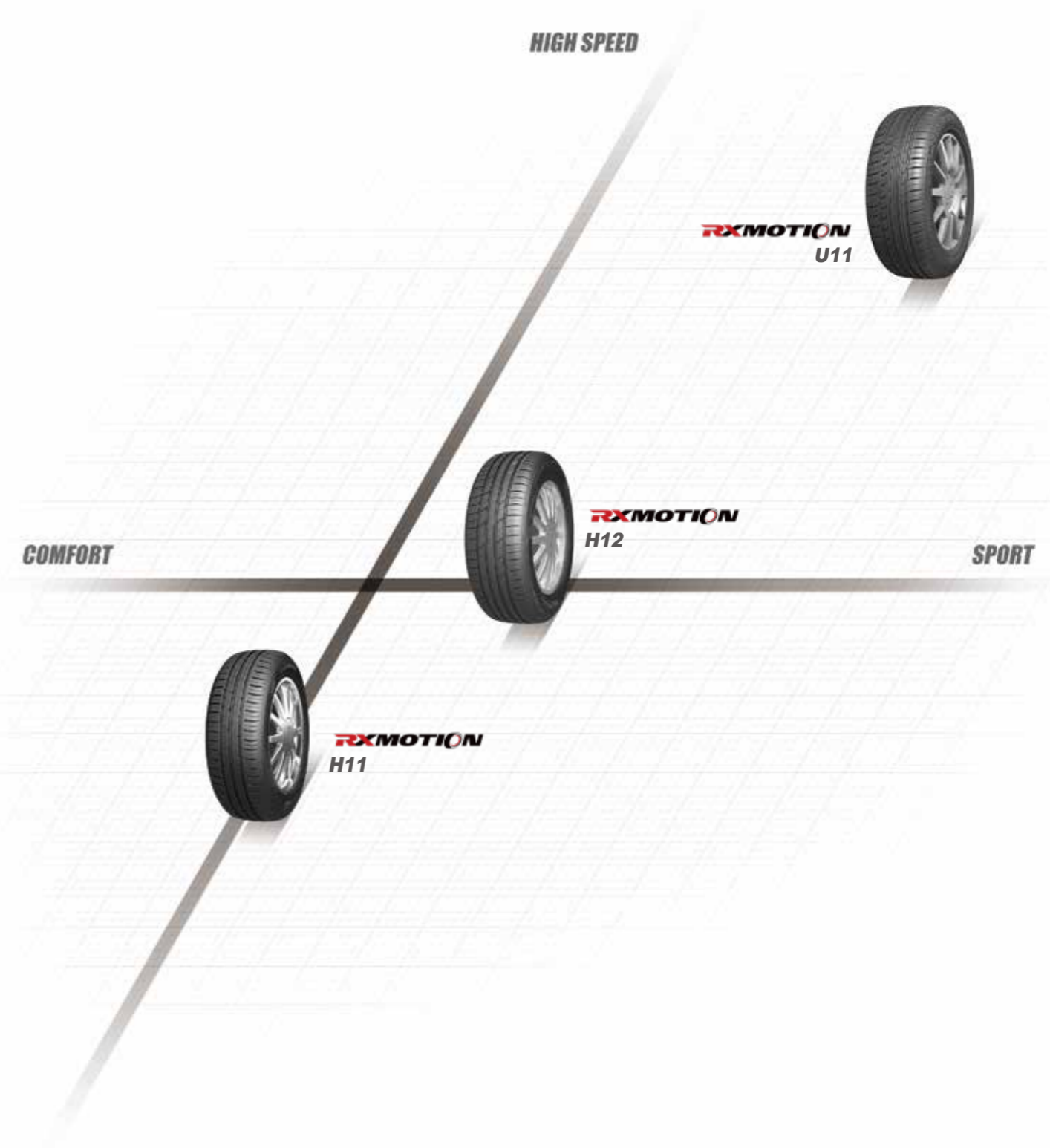
## RXFROST

WH01	P32	WINTER-HP
WU01	P34	WINTER-UHP
WH02	P36	WINTER-HP-STUDDABLE
WH12	P38	WINTER-HP-STUDDABLE
WH03	P42	WINTER-HP-STUDLESS
WC01	P44	WINTER-LTC
WCS01	P46	WINTER-LTC-STUDDABLE

## PRODUCT POSITIONING

## SUMMER SERIES

Passenger tyres



**RXQUEST**

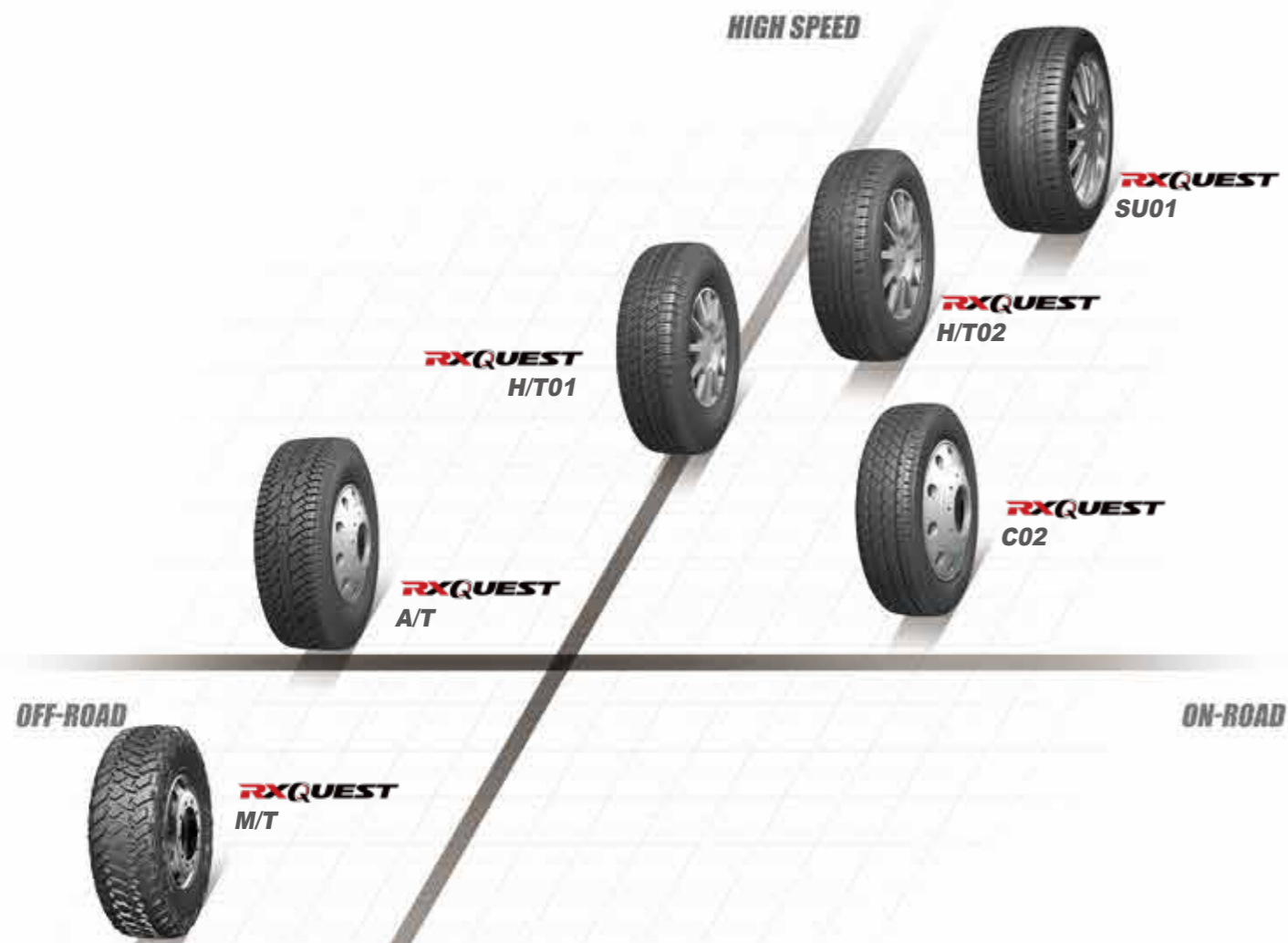
**SUMMER & M+S SERIES**

SUV 4x4 and VAN tyres

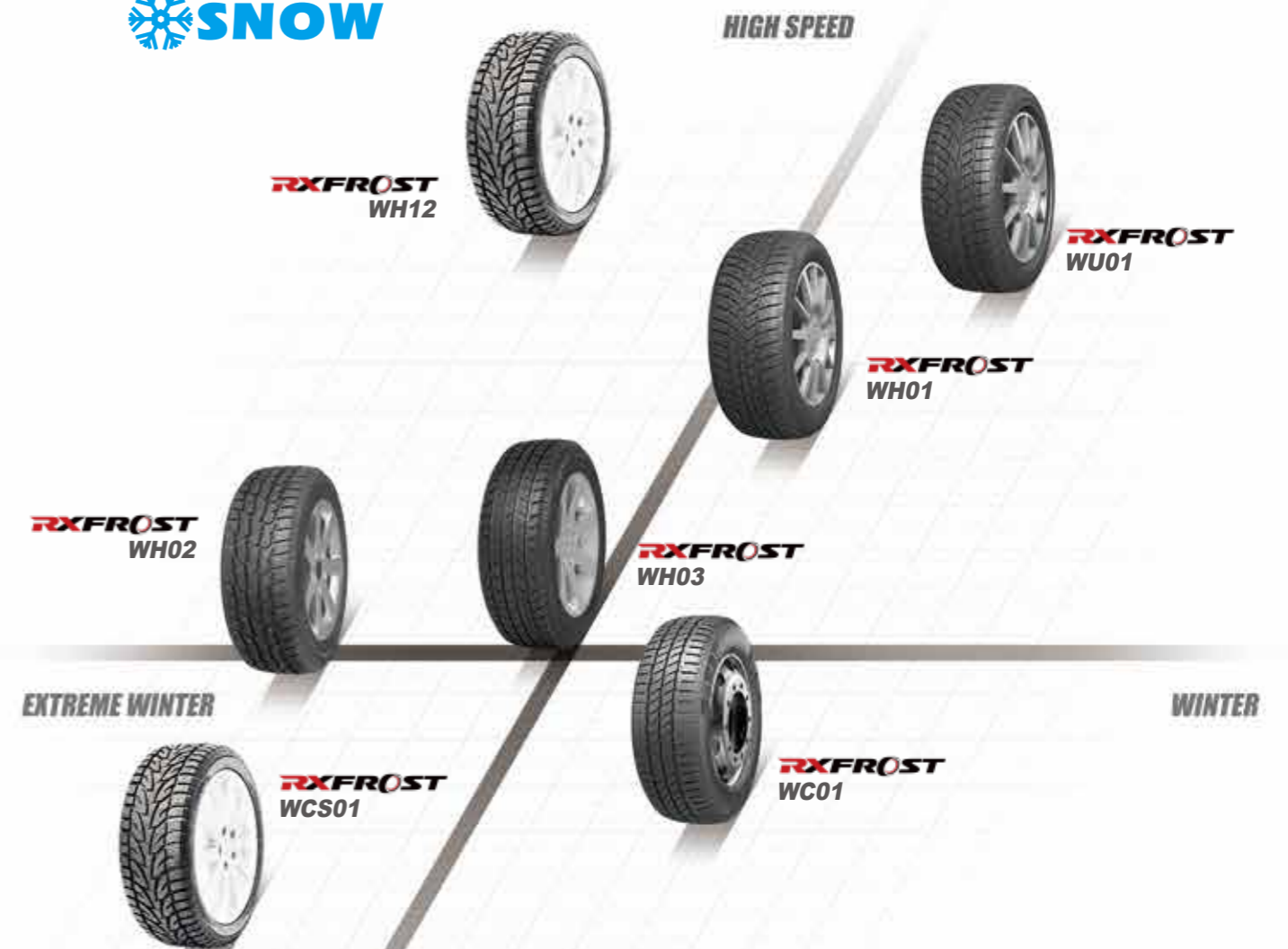
**RXFROST**

**WINTER SERIES**

Winter tyres



 **SNOW**



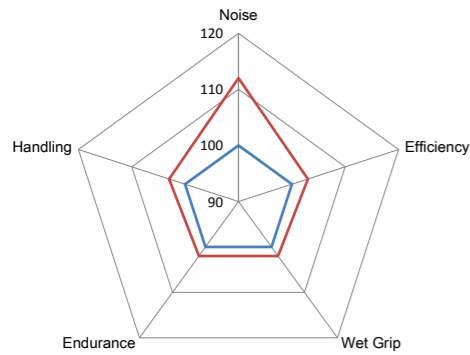


# H11

SUMMER-HP



The specially formulated compounds are **ECO FRIENDLY**, highly fuel efficient and long lasting.



— HP H11 — EXISTING PRODUCT



■ **Shoulder Designed**

The closed shoulder design strengthens shoulder blocks for superior handling performance.



■ **Wet Performance**

The three wide tread grooves and wave-like sipes efficiently drain water to improve grip on wet roads and improve driving safety.

■ **Handling**

A pair of center ribs and the solid shoulder blocks maintain stable contact with the road to ensure great handling.



WEST HAM UNITED GLOBAL TYRE PARTNER

Rim	Size	LI	SR	XL	Tread Depth	Standard RIM	Section Width	Overall Diameter	Pressure	SW	RR	WG	NG Db	NG	Rim Protection
					mm	inch	mm	mm	kPa						
13	145/80R13	75	T		7	4.00B	145	562	300	BSW		E C 70 2			
	155/65R13	73	T		7.3	4.50B	157	532	300	BSW		E C 70 2			
	155/70R13	75	T		7	4.50B	157	548	300	BSW		E C 70 2			
	155/80R13	79	T		7	4.50B	157	578	300	BSW		E C 70 2			
	165/65R13	77	T		7.2	5.00B	170	544	300	BSW		E C 70 2			
	165/70R13	79	T		7.2	5.00B	170	562	300	BSW		E C 70 2			
	165/70R13	83	T	XL	7.2	5.00B	170	562	340	BSW		E C 71 2			
	165/80R13	83	T		7.2	4.50B	165	594	300	BSW		E C 70 2			
	175/70R13	82	T		7.2	5.00B	177	576	300	BSW		E C 70 2			
	185/70R13	86	T		7.4	5.50B	189	590	300	BSW		E C 70 2			
14	155/65R14	75	T		7	4 1/2J	157	558	300	BSW		E C 70 2			
	165/60R14	75	H		7.2	5J	170	554	300	BSW		E C 70 2			
	165/65R14	79	T		7.2	5J	170	570	300	BSW		E C 70 2			
	165/70R14	85	T	XL	7.2	5J	170	588	340	BSW		E C 71 2			
	165/70R14	81	T		7.2	5J	170	588	300	BSW		E C 70 2			
	165/80R14	85	T		7.2	4 1/2J	165	620	300	BSW		E C 70 2			
	175/65R14	86	T	XL	7.2	5J	177	584	340	BSW		E C 71 2			
	175/65R14	82	T		7.2	5J	177	584	300	BSW		E C 70 2			
	175/70R14	88	T	XL	7.2	5J	177	602	340	BSW		E C 71 2			
	175/70R14	84	T		7.2	5J	177	602	300	BSW		E C 70 2			
	185/60R14	82	H		7.4	5 1/2J	189	578	300	BSW		E C 70 2			
	185/65R14	86	H		7.4	5 1/2J	189	596	300	BSW		E C 70 2			
	185/70R14	88	T		7.4	5 1/2J	189	616	300	BSW		E C 70 2			
	185/70R14	88	H		7.4	5 1/2J	189	616	300	BSW		E C 70 2			
	195/60R14	86	H		8	6J	201	590	300	BSW		E C 71 2			
195/65R14	89	H		7.4	6J	201	610	300	BSW		E C 71 2				
195/70R14	91	T		7.4	6J	201	630	300	BSW		E C 71 2				
15	165/60R15	77	H		7.2	5J	170	554	300	BSW		E C 70 2			

1inch=25.4mm | 1kPa=0.142psi | 1KG=2.2 lbs | XL Extra Load | LI Load Index | SS Speed Symbol



# H12

SUMMER-HP



1inch=25.4mm	1kPa=0.142psi	1KG=2.2 lbs
XL Extra Load	LI Load Index	SS Speed Symbol

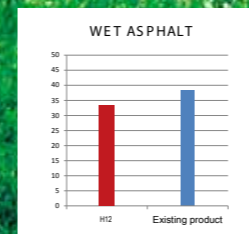
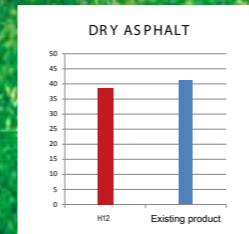


Rim	Size	LI	SR	XL	Tread Depth	Standard RIM	Section Width	Overall Diameter	Pressure	SW	RR	WG	NG Db	NG	Rim Protection
					mm	inch	mm	mm	kPa						
14	185/55R14	80	V		7.4	6J	194	560	300	BSW		E C 70 2			YES
	205/70R14	98	T	XL	7.7	6J	209	644	340	BSW		C C 71 2			
	165/65R15	81	H		7.2	5J	170	595	300	BSW		E C 70 2			
	175/55R15	77	H		7.6	5 1/2J	182	573	300	BSW		E C 70 2			YES
	175/65R15	88	H	XL	7.2	5J	177	609	340	BSW		E C 71 2			
	175/65R15	84	H		7.2	5J	177	609	300	BSW		E C 70 2			
	175/65R15	84	T		7.2	5J	177	609	300	BSW		E C 70 2			
	185/55R15	82	V		7.4	6J	194	585	300	BSW		E C 70 2			YES
	185/60R15	88	H	XL	7.4	5 1/2J	189	603	340	BSW		E C 71 2			
	185/60R15	84	H		7.4	5 1/2J	189	603	300	BSW		E C 70 2			
15	185/65R15	92	H	XL	7.4	5 1/2J	189	621	340	BSW		C B 71 2			
	185/65R15	88	H		7.4	5 1/2J	189	621	300	BSW		E C 70 2			
	195/45R15	78	W		7.4	6 1/2J	195	557	300	BSW		E C 71 2			YES
	195/50R15	82	V		7.4	6J	201	577	300	BSW		E C 71 2			YES
	195/55R15	85	V		7.4	6J	201	595	300	BSW		E C 71 2			YES
	195/60R15	88	H		7.4	6J	201	615	300	BSW		E C 71 2			
	195/60R15	88	V		7.4	6J	201	615	300	BSW		E C 71 2			
	195/65R15	91	V		7.4	6J	201	635	300	BSW		E C 71 2			
	195/65R15	95	H	XL	7.4	6J	201	635	340	BSW		C B 71 2			
	195/65R15	91	H		7.4	6J	201	635	300	BSW		E C 71 2			
	205/50R15	89	V	XL	7.7	6 1/2J	214	587	340	BSW		E C 71 2			YES
	205/60R15	95	V	XL	7.7	6J	209	627	340	BSW		C C 71 2			
	205/65R15	94	V		7.7	6J	209	647	300	BSW		C C 71 2			
	205/70R15	96	H		7.7	6J	209	669	300	BSW		C C 71 2			
	215/60R15	98	V	XL	7.7	6 1/2J	221	639	340	BSW		C C 71 2			
	215/65R15	96	V		7.7	6 1/2J	221	661	300	BSW		C C 71 2			
	215/70R15	98	H		7.7	6 1/2J	221	683	300	BSW		C C 71 2			
	225/60R15	96	V		7.7	6 1/2J	228	651	300	BSW		C C 71 2			
16	185/55R16	83	V		7.4	6J	194	610	300	BSW		E C 70 2			YES
	185/55R16	87	V	XL	7.4	6J	194	610	340	BSW		E C 70 2			YES
	195/45R16	84	W	XL	7.4	6 1/2J	195	582	340	BSW		E C 71 2			YES
	195/45R16	84	V	XL	7.4	6 1/2J	195	582	340	BSW		E C 71 2			YES
	195/50R16	88	V	XL	7.4	6J	201	602	340	BSW		E C 71 2			YES
	195/55R16	91	V	XL	7.4	6J	201	620	340	BSW		E C 71 2			YES
	195/55R16	87	V		7.4	6J	201	620	300	BSW		E C 71 2			YES
	195/60R16	89	V		7.4	6J	201	640	300	BSW		E C 71 2			
	205/45R16	87	W	XL	8	7J	206	590	340	BSW		E C 71 2			YES
	205/55R16	91	V		7.7	6 1/2J	214	632	300	BSW		E C 71 2			YES
	205/55R16	94	V	XL	7.7	6 1/2J	214	632	340	BSW		C C 71 2			YES
	205/60R16	96	V	XL	7.7	6J	209	652	340	BSW		C C 71 2			
	205/60R16	92	V		7.7	6J	209	652	300	BSW		C C 71 2			
	205/65R16	95	H		7.7	6J	209	672	300	BSW		C C 71 2			
	215/60R16	95	V		7.7	6 1/2J	221	664	300	BSW		C C 71 2			
	215/60R16	99	V	XL	7.7	6 1/2J	221	664	340	BSW		C C 71 2			
215/65R16	98	H		7.7	6 1/2J	221	686	300	BSW		C C 71 2				
225/60R16	102	V	XL	7.7	6 1/2J	228	676	340	BSW		C C 71 2				
235/60R16	100	V		8	7J	240	688	300	BSW		C C 71 2				
18	215/55R18	99	V	XL	7.7	7J	226	693	340	BSW		C C 71 2			YES

## ROADX

# ENVIRONMENTALLY FRIENDLY HP TYRE

compound formulation with HD Silica and advanced SBR to ensure safety while driving.



■ **High Performance Safety**

Unique asymmetric pattern design features three main ribs and specially designed blocks which maximize the tyre's contact footprint area for great cornering and stability on dry roads.

■ **Driving Safety**

Thin strips on the inside of the groove improve water drainage and better disperse heat.

■ **Wet Performance**

Four main grooves provide efficiently water drainage to improve handling and grip on wet roads.



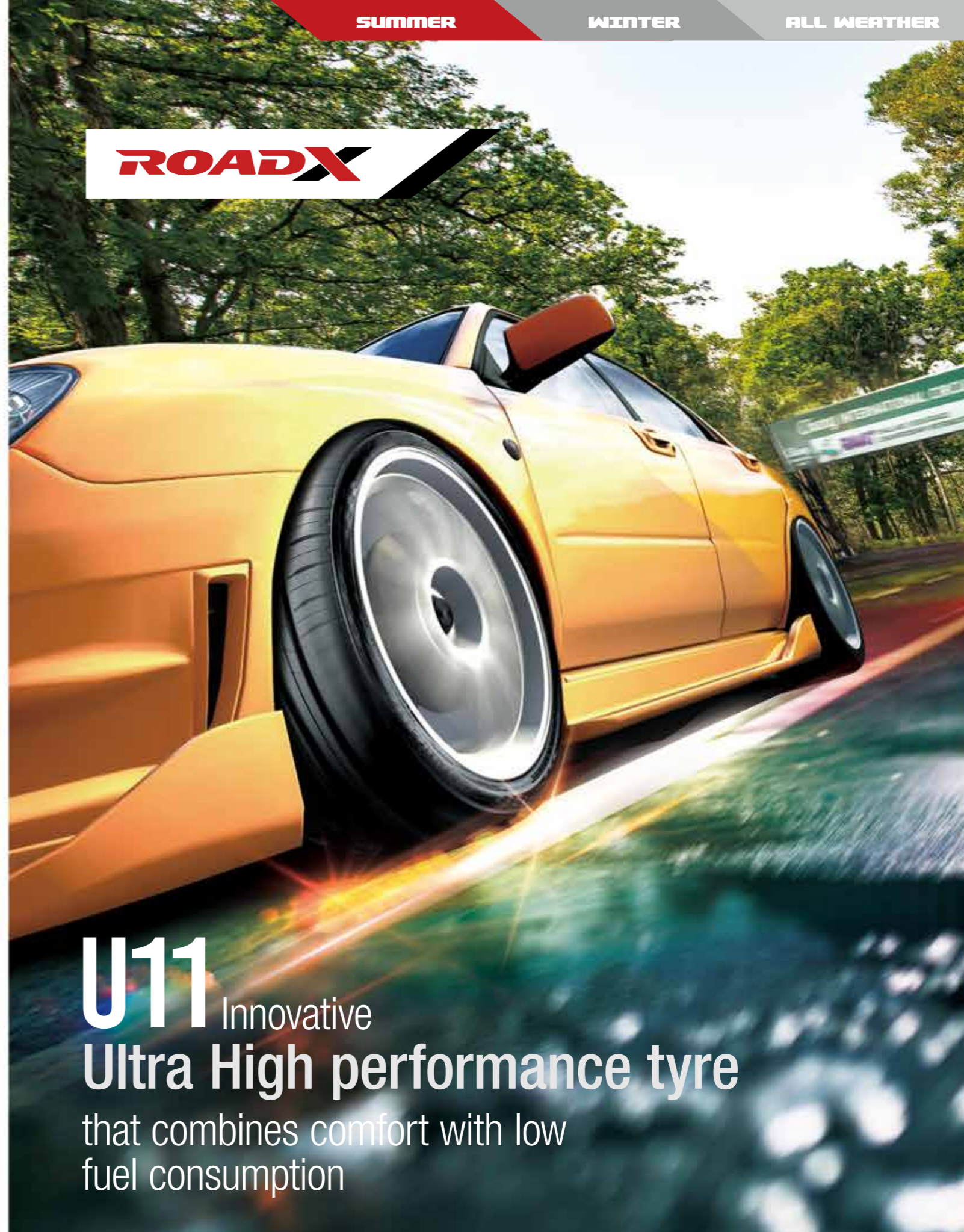




- Fuel Economy**  
 The special tread compound reduces rolling resistance to provide more efficient fuel consumption.
- Driving Comfort**  
 The varying pitch order and block sipe design better absorb vibrations emitted from the tyre for a quieter ride.
- Tread Pattern**  
 The asymmetric tread pattern contains a center rib for strong grip and handling which allows for precision steering and braking. The four wide grooves are inlaid with horizontal notches which enhance water expulsion for great handling in wet conditions.

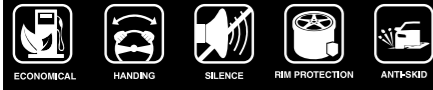
Rim	Size	LI	SR	XL	Tread Depth	Standard RIM	Section Width	Overall Diameter	Pressure	SW	RR	WG	NG Db	NG	Rim Protection
					mm	inch	mm	mm	kPa						
15	185/45ZR15	75	Y		7.5	6J	183	547	300	BSW	E	C	70	2	YES
	205/50ZR16	87	W		8	6 1/2J	214	612	300	BSW	E	C	71	2	YES
16	205/55ZR16	94	W	XL	8.2	6 1/2J	214	632	340	BSW	E	C	72	2	YES
	215/45R16	90	V	XL	7.5	7J	213	600	340	BSW	E	C	72	2	YES
	215/45ZR16	90	Y	XL	7.5	7J	213	600	340	BSW	E	C	72	2	YES
	215/55ZR16	97	W	XL	8.2	7J	226	642	340	BSW	E	C	72	2	YES
	225/55ZR16	99	W	XL	8.2	7J	233	654	340	BSW	E	C	72	2	YES
	225/55ZR16	99	Y	XL	8.2	7J	233	654	340	BSW			TBD		YES

1inch=25.4mm | 1kPa=0.142psi | 1KG=2.2 lbs | XL Extra Load | LI Load Index | SS Speed Symbol



**U11** Innovative  
**Ultra High performance tyre**  
 that combines comfort with low  
 fuel consumption





WEST HAM UNITED GLOBAL TYRE PARTNER

Rim	Size	LI	SR	XL	Tread Depth	Standard RIM	Section Width	Overall Diameter	Pressure	SW	RR	WG	NG Db	NG	Rim Protection
					mm	inch	mm	mm							
17	185/45ZR17	82	Y	XL	7.5	6J	183	598	340	BSW	E	C	71	2	YES
	195/40ZR17	81	Y	XL	7.5	7J	200	588	340	BSW	E	C	72	2	YES
	195/45ZR17	85	Y	XL	7.5	6 1/2J	195	608	340	BSW	E	C	72	2	YES
	205/40ZR17	84	W	XL	8	7 1/2J	212	596	340	BSW	E	C	71	2	YES
	205/45ZR17	88	W	XL	8	7J	206	616	340	BSW	E	C	72	2	YES
	205/50ZR17	93	W	XL	8	6 1/2J	214	638	340	BSW	E	C	72	2	YES
	205/55ZR17	95	Y	XL	7.5	6 1/2J	214	658	340	BSW	E	C	71	2	YES
	215/40ZR17	87	Y	XL	7.5	7 1/2J	218	604	340	BSW	E	C	72	2	YES
	215/45ZR17	91	W	XL	8	7J	213	626	340	BSW	E	C	72	2	YES
	215/50ZR17	95	W	XL	8	7J	226	648	340	BSW	E	C	72	2	YES
	215/55ZR17	94	W		8	7J	226	668	300	BSW	E	C	71	2	YES
	215/55ZR17	98	W	XL	8	7J	226	668	340	BSW	E	C	71	2	YES
	225/45ZR17	94	W	XL	8	7 1/2J	225	634	340	BSW	E	C	72	2	YES
	225/50ZR17	98	W	XL	8.2	7J	233	658	340	BSW	E	C	72	2	YES
	225/55ZR17	101	W	XL	8.2	7J	233	680	340	BSW	E	C	72	2	YES
	235/45ZR17	97	W	XL	8.2	8J	236	644	340	BSW	E	C	72	2	YES
	235/50ZR17	100	Y	XL	7.5	7 1/2J	245	668	340	BSW	C	C	72	2	YES
	245/40ZR17	95	W	XL	8	8 1/2J	248	628	340	BSW	E	C	71	2	YES
	245/45ZR17	99	Y	XL	7.5	8J	243	652	340	BSW	C	C	71	2	YES
	215/35ZR18	84	Y	XL	7.5	7 1/2J	218	607	340	BSW	E	C	72	2	YES
215/40ZR18	89	Y	XL	7.5	7 1/2J	218	629	340	BSW	E	C	72	2	YES	
215/45ZR18	93	Y	XL	7.5	7J	213	651	340	BSW	E	C	72	2	YES	
225/35ZR18	87	Y	XL	7.5	8J	230	615	340	BSW	E	C	72	2	YES	
225/40ZR18	92	W	XL	8	8J	230	637	340	BSW	E	C	71	2	YES	
225/45ZR18	95	W	XL	8	7 1/2J	225	659	340	BSW	E	C	72	2	YES	
235/35ZR18	90	Y	XL	7.5	8 1/2J	241	621	340	BSW	E	C	71	2	YES	
235/40ZR18	95	W	XL	8	8 1/2J	241	645	340	BSW	E	C	71	2	YES	
235/45ZR18	98	Y	XL	7.5	8J	236	669	340	BSW	E	C	72	2	YES	
235/50ZR18	101	W	XL	7.5	7 1/2J	245	693	340	BSW	B	C	72	2	YES	
245/35ZR18	92	Y	XL	7.5	8 1/2J	248	629	340	BSW	E	C	71	2	YES	
245/40ZR18	97	Y	XL	8	8 1/2J	248	653	340	BSW	E	C	71	2	YES	
245/45ZR18	100	W	XL	8	8J	243	677	340	BSW	C	C	71	2	YES	
245/45ZR18	100	Y	XL	8	8J	243	677	340	BSW		TBD			YES	
255/35ZR18	94	Y	XL	8	9J	260	635	340	BSW	E	C	73	2	YES	
255/40ZR18	99	Y	XL	7.5	9J	260	661	340	BSW	E	C	73	2	YES	
255/45ZR18	103	Y	XL	7.5	8 1/2J	255	687	340	BSW	C	C	73	2	YES	
265/35ZR18	97	Y	XL	7.5	9 1/2J	271	643	340	BSW	C	C	73	2	YES	
275/40ZR18	103	Y	XL	7.5	9 1/2J	278	677	340	BSW	C	C	73	2	YES	

1inch=25.4mm | 1kPa=0.142psi | 1KG=2.2 lbs | XL Extra Load | LI Load Index | SS Speed Symbol

Rim	Size	LI	SR	XL	Tread Depth	Standard RIM	Section Width	Overall Diameter	Pressure	SW	RR	WG	NG Db	NG	Rim Protection
					mm	inch	mm	mm							
19	215/35ZR19	85	Y	XL	7.5	7 1/2J	218	633	340	BSW	E	C	72	2	YES
	225/35ZR19	88	Y	XL	7.5	8J	230	641	340	BSW	E	C	72	2	YES
	225/40ZR19	93	Y	XL	7.5	8J	230	663	340	BSW	E	C	72	2	YES
	235/35ZR19	91	Y	XL	8	8 1/2J	241	647	340	BSW	E	C	71	2	YES
	235/40ZR19	96	Y	XL	7.5	8 1/2J	241	671	340	BSW	C	C	71	2	YES
	235/45ZR19	99	Y	XL	7.5	8J	236	695	340	BSW	C	C	72	2	YES
	245/35ZR19	93	Y	XL	8	8 1/2J	248	655	340	BSW	E	C	71	2	YES
	245/40ZR19	98	Y	XL	8	8 1/2J	248	679	340	BSW	E	C	71	2	YES
	245/45ZR19	102	Y	XL	7.5	8J	243	703	340	BSW	C	C	71	2	YES
	255/30ZR19	91	Y	XL	7.5	9J	260	637	340	BSW	E	C	73	2	YES
	255/35ZR19	96	Y	XL	8	9J	260	661	340	BSW	E	C	73	2	YES
	255/45ZR19	104	W	XL	8	8 1/2J	255	713	340	BSW	C	C	73	2	YES
	255/50ZR19	107	Y	XL	8	8J	265	739	340	BSW	C	C	73	2	YES
	265/30ZR19	93	Y	XL	8	9 1/2J	271	643	340	BSW	E	C	73	2	YES
	265/35ZR19	98	Y	XL	7.5	9 1/2J	271	669	340	BSW	C	C	73	2	YES
	275/30ZR19	96	Y	XL	8	9 1/2J	278	649	340	BSW	E	C	73	2	YES
	275/35ZR19	100	Y	XL	8	9 1/2J	278	675	340	BSW	C	C	73	2	YES
	275/40ZR19	105	Y	XL	7.5	9 1/2J	278	703	340	BSW	C	C	73	2	YES
	275/45ZR19	108	Y	XL	7.5	9J	273	731	340	BSW	C	C	73	2	YES
	285/45ZR19	111	Y	XL	8	9 1/2J	285	739	340	BSW	C	C	73	2	YES
20	225/30ZR20	85	Y	XL	7.5	8J	230	644	340	BSW	E	C	72	2	YES
	245/35ZR20	95	Y	XL	7.5	8 1/2J	248	680	340	BSW	E	C	71	2	YES
	245/40ZR20	99	Y	XL	7.5	8 1/2J	248	704	340	BSW	C	C	71	2	YES
	255/35ZR20	97	Y	XL	7.5	9J	260	686	340	BSW	E	C	73	2	YES
	255/40ZR20	101	Y	XL	7.5	9J	260	712	340	BSW	C	C	73	2	YES
	265/50ZR20	111	Y	XL	7.5	8 1/2J	277	774	340	BSW	C	C	73	2	YES
	275/35ZR20	102	Y	XL	7.5	9 1/2J	278	700	340	BSW	C	C	73	2	YES
	275/40ZR20	106	Y	XL	8	9 1/2J	278	728	340	BSW	C	C	73	2	YES
	275/45ZR20	110	Y	XL	8	9J	273	756	340	BSW	B	C	73	2	YES
	295/35ZR20	105	Y	XL	7.5	10 1/2J	301	714	340	BSW	C	C	73	2	YES
21	315/35ZR20	110	Y	XL	8	11J	320	728	340	BSW	C	C	73	2	YES
	285/35ZR21	105	Y	XL	8	10J	290	733	340	BSW	C	C	73	2	YES
	295/35ZR21	107	Y	XL	8	10 1/2J	301	739	340	BSW	C	C	73	2	YES
22	325/30ZR21	108	Y	XL	8	11 1/2J	331	729	340	BSW	C	C	73	2	YES
	265/40ZR22	106	Y	XL	7.5	9 1/2J	271	771	340	BSW	C	C	73	2	YES

1inch=25.4mm | 1kPa=0.142psi | 1KG=2.2 lbs | XL Extra Load | LI Load Index | SS Speed Symbol



# RUN-FLAT

NEW TECHNOLOGY

H12 RFT

SU01 RFT

U11 RFT



Rim	Size	LI	SR	XL	Tread Depth	Standard RIM	Section Width	Overall Diameter	Pressure	SW	RR	WG	NG Db	NG	Rim Protection
					mm	inch	mm	mm	kPa						
<b>H12 RFT</b>															
16	195/55RF16	91	V	XL	7.4	6J	201	620	340	BSW		E C 71 2			YES
<b>SU01 RFT</b>															
18	235/50RF18	97	V		8	7 1/2J	245	693	300	BSW		E A 71 2			YES
	255/55RF18	105	H		8	8J	265	737	300	BSW		C A 72 2			YES
<b>U11 RFT</b>															
16	205/55ZRF16	94	W	XL	8.2	6 1/2J	214	632	340	BSW		E C 72 2			YES
	225/55ZRF16	99	W	XL	8.2	7J	233	654	340	BSW		E C 72 2			YES
17	205/45ZRF17	88	W	XL	8	7J	206	616	340	BSW		E C 72 2			YES
	205/50ZRF17	93	W	XL	8	6 1/2J	214	638	340	BSW		E C 72 2			YES
	205/55RF17	91	V		7.5	6 1/2J	214	658	300	BSW		TBD			YES
	225/45ZRF17	94	W	XL	8	7 1/2J	225	634	340	BSW		E C 72 2			YES
	225/50ZRF17	98	W	XL	8.2	7J	233	658	340	BSW		E C 72 2			YES
	225/55ZRF17	101	W	XL	8.2	7J	233	680	340	BSW		E C 72 2			YES
18	215/40ZRF18	85	Y		7.5	7 1/2J	218	629	300	BSW		TBD			YES
	225/40ZRF18	92	W	XL	8	8J	230	637	340	BSW		E C 71 2			YES
	225/45ZRF18	95	W	XL	8	7 1/2J	225	659	340	BSW		E C 71 2			YES
	245/35ZRF18	92	Y	XL	7.5	8 1/2J	248	629	340	BSW		TBD			YES
	245/40ZRF18	97	Y	XL	8	8 1/2J	248	653	340	BSW		E C 72 2			YES
	245/45ZRF18	100	W	XL	8	8J	243	677	340	BSW		C C 71 2			YES
	245/50ZRF18	100	Y		8	7 1/2J	253	703	300	BSW		C C 71 2			YES
	255/35ZRF18	94	Y	XL	8	9J	260	635	340	BSW		E C 73 2			YES
19	225/40ZRF19	89	W		7.5	8J	230	663	300	BSW		TBD			YES
	235/45ZRF19	99	W	XL	7.5	8J	236	695	340	BSW		E C 72 2			YES
	245/40ZRF19	98	Y	XL	8	8 1/2J	248	679	340	BSW		E C 71 2			YES
	245/45ZRF19	102	W	XL	7.5	8J	243	703	340	BSW		C C 71 2			YES
	245/45ZRF19	98	Y		7.5	8J	243	703	300	BSW		TBD			YES
	255/30ZRF19	91	Y	XL	7.5	9J	260	637	340	BSW		TBD			YES
	255/35ZRF19	96	Y	XL	8	9J	260	661	340	BSW		TBD			YES
	255/50RF19	103	V		8	8J	265	739	300	BSW		C C 72 2			YES
	275/35ZRF19	100	Y	XL	8	9 1/2J	278	675	340	BSW		E C 73 2			YES
	275/40ZRF19	101	W		7.5	9 1/2J	278	703	300	BSW		C C 72 2			YES
275/40ZRF19	101	Y		7.5	9 1/2J	278	703	300	BSW		TBD			YES	



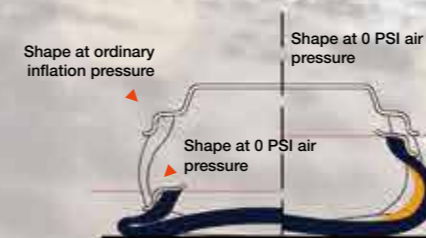
# NEW TECHNOLOGY GREATER SAFETY

H12 RFT / SU01 RFT / U11 RFT

This is where run-flat tyres come in; after the tyre begins leaking air, the sidewall maintains its shape in order to continue to support the weight of the vehicle.



- RFT Product Features:
1. No more delays or being stranded on remote highways due to a flat tyre. RFT products will continue to drive at up to 80 KPH without having to be replaced immediately.
  2. Helps to avoid accidents caused by the loss of control from punctures or air leaks, increasing overall safety.
  3. Even when the tyre begins leaking air you can drive to your local tyre dealer to have it repaired. RFT technology also means there is no need to carry a spare which helps increase storage space within the vehicle.



Run-flat tyres (RFT), also known as "self-supporting run-flat tyres," are an important safety feature for any vehicle. A Run-flat tyre is built with a thicker sidewall to help support the tyre shape after losing air. This allows the tyre to continue to run safely, but at a limited speed and mileage. When normal tyres are punctured, they can instantly lead to a severe sidewall collapse; in the event of a collapse, the vehicle loses its only support which can cause the vehicle's center of gravity to change instantaneously. RFT helps to lessen the severity of a flat tyre and allows you to get to the closest destination safely.



**RXMOTION**

**4S**

**ALL-WEATHER**

SKID RESISTANT SNOW TRACTION HANDING COMFORT



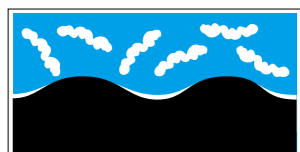
**SPECIALTY ALL SEASON PRODUCT FOR EUROPE.**



- Grip**  
 New sipe design substantially enhances tread block grip and overall braking.
- Driving Comfort**  
 Tread design is optimized for a comfortable drive year-round.
- Handling and Stability**  
 New tread design with three main grooves that greatly improves handling and stability.

**1** Specialized silica compound reduces rolling resistance and improves grip.

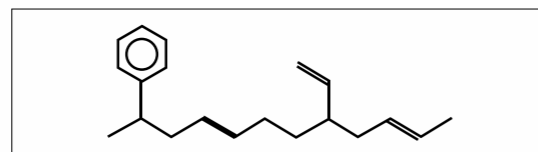
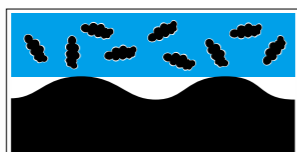
White Carbon Black Filler



The friction generated using white carbon black is smaller when compared to standard carbon black to greatly reduce rolling resistance. It also had greater elasticity making it easier to absorb abrasions and increase grip.

**2** Specialized winter compound solutions prepare the tyre to perform year-round and improves hydroplaning resistance on wet roads.

Carbon Black Filler



**Inner Pattern**

Improved handling in snow and rain

**Outer Pattern**

Handling performance and stability in dry conditions

- Excellent handling for both snow and rain.
- Tread designed to reduce driving noise.
- Great handling and driving stability.
- Tread compounds made specifically for all-season use so you can enjoy a year-round carefree driving experience.

Rim	Size	LI	SR	XL	Tread Depth	Standard RIM	Section Width	Overall Diameter	Pressure	SW	RR	WG	NG Db	NG	Rim Protection
					mm	inch	mm	mm	kPa						
13	155/70R13	75	T		8	4.50B	157	548	300	BSW	E	C	71	2	YES
	155/80R13	79	T		8	4.50B	157	578	300	BSW	E	C	71	2	YES
14	155/65R14	75	T		8	4 1/2J	157	558	300	BSW	E	C	71	2	YES
	165/60R14	79	H	XL	8	5J	170	554	340	BSW	E	C	71	2	YES
	165/65R14	79	T		8	5J	170	570	300	BSW	E	C	71	2	YES
	165/70R14	85	T	XL	8	5J	170	588	340	BSW	E	C	71	2	YES
	175/65R14	82	T		8.5	5J	177	584	300	BSW	E	C	71	2	YES
	175/70R14	84	T		8.5	5J	177	602	300	BSW	E	C	71	2	YES
	175/70R14	88	T	XL	8.5	5J	177	602	340	BSW	E	C	71	2	YES
15	185/60R14	82	T		8.5	5 1/2J	189	578	300	BSW	E	C	71	2	YES
	185/65R14	86	T		8.5	5 1/2J	189	596	300	BSW	E	C	71	2	YES
	175/65R15	84	H		8.5	5J	177	609	300	BSW	E	C	71	2	YES
	185/55R15	82	H		8.5	6J	194	585	300	BSW	E	C	71	2	YES
	185/60R15	88	H	XL	8.5	5 1/2J	189	603	340	BSW	E	C	71	2	YES
	185/65R15	88	H		8.5	5 1/2J	189	621	300	BSW	E	C	71	2	YES
	185/65R15	92	T	XL	8.5	5 1/2J	189	621	340	BSW	E	C	71	2	YES
	195/50R15	82	H		8.5	6J	201	577	300	BSW	E	C	71	2	YES
	195/55R15	85	H		8.5	6J	201	595	300	BSW	E	C	71	2	YES
	195/60R15	88	H		8.5	6J	201	615	300	BSW	E	C	71	2	YES
16	195/65R15	91	H		8.5	6J	201	635	300	BSW	E	C	71	2	YES
	195/55R16	87	V		8.5	6J	201	620	300	BSW	E	C	71	2	YES
	205/45R16	87	V	XL	8.5	7J	206	590	340	BSW	E	C	71	2	YES
	205/55R16	94	H	XL	8.5	6 1/2J	214	632	340	BSW	E	B	71	2	YES
	205/55R16	94	V	XL	8.5	6 1/2J	214	632	340	BSW	E	B	71	2	YES
	205/60R16	96	V	XL	8.5	6J	209	652	340	BSW	E	B	72	2	YES
	215/55R16	97	V	XL	8.5	7J	226	642	340	BSW	E	B	72	2	YES
	215/60R16	99	V	XL	8.5	6 1/2J	221	664	340	BSW	C	B	72	2	YES
	225/55R16	99	V	XL	8.5	7J	233	654	340	BSW	C	B	72	2	YES
	17	205/50R17	93	V	XL	8.5	6 1/2J	214	638	340	BSW	E	C	71	2
225/45R17		94	V	XL	8.5	7 1/2J	225	634	340	BSW	E	B	72	2	YES
225/50R17		98	V	XL	8.5	7J	233	658	340	BSW	C	B	72	2	YES

1inch=25.4mm 1kPa=0.142psi 1KG=2.2 lbs XL Extra Load LJ Load Index SS Speed Symbol

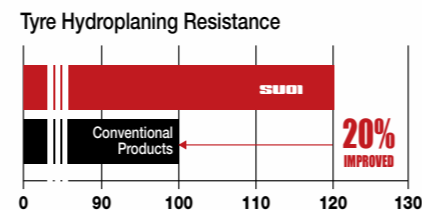
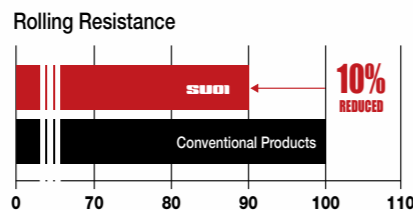




Specially designed UHP SUV tyre.



Four main grooves drain water efficiently to improve handling in wet conditions.

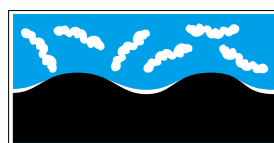


- Safety**  
 The center rib design provides greater traction for safer acceleration and braking.
- Wear Resistance**  
 The silicon compound tread makes the tyre more wear resistance.
- Comfortable Ride**  
 The tread block pitch and built-in sipes reduce tyre vibration and noise for a more comfortable ride.

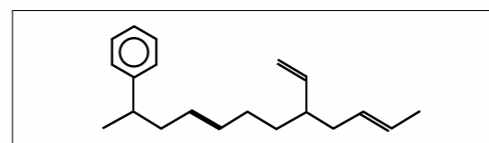
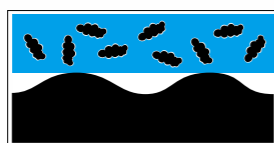
**1** Extensive use of white carbon black helps reduce tyre rolling resistance and improve skid resistance.

**2** The body material is composed of a special tread compound to increase hydroplaning resistance and improve heat dissipation.

White Carbon Black Filler



Carbon Black Filler



The friction generated using white carbon black is smaller when compared to standard carbon black to greatly reduce rolling resistance. It also had greater elasticity making it easier to absorb abrasions and increase grip.



WEST HAM UNITED GLOBAL TYRE PARTNER

Rim	Size	LI	SR	XL	Tread Depth	Standard RIM	Section Width	Overall Diameter	Pressure	SW	RR	WG	NG Db	NG	Rim Protection	
					mm	inch	mm	mm	kPa							
17	235/55R17	103	W	XL	8	7 1/2J	245	690	340	BSW	E	A	72	2	YES	
	225/55R18	102	W	XL	8	7J	233	705	340	BSW	E	A	72	2	YES	
	225/55R18	102	V	XL	8	7J	233	705	340	BSW	C	B	72	2	YES	
	225/60R18	100	V		8	6 1/2J	228	727	300	BSW	E	A	72	2	YES	
	235/50R18	97	V		8	7 1/2J	245	693	300	BSW	E	A	72	2	YES	
	235/55R18	104	W	XL	8	7 1/2J	245	715	340	BSW	E	A	72	2	YES	
	18	235/60R18	107	W	XL	8	7J	240	739	340	BSW	C	A	72	2	YES
		245/60R18	105	V		8	7J	248	751	300	BSW	E	A	71	2	YES
		255/55R18	109	Y	XL	8	8J	265	737	340	BSW	C	A	72	2	YES
		255/60R18	112	V	XL	8	7 1/2J	260	763	340	BSW	C	A	72	2	YES
265/60R18		110	V		8	8J	272	775	300	BSW	C	A	71	2	YES	
275/40R18		103	W	XL	8	9 1/2J	278	677	340	BSW	E	A	71	2	YES	
19	225/45R19	96	W	XL	8	7 1/2J	225	685	340	BSW	C	B	72	2	YES	
	225/55R19	99	W		8	7J	233	731	300	BSW	C	B	71	2	YES	
	235/55R19	101	W		8	7 1/2J	245	741	300	BSW	E	A	71	2	YES	
	245/55R19	103	V		8	7 1/2J	253	753	300	BSW	E	A	71	2	YES	
	255/55R19	111	Y	XL	8	8J	265	763	340	BSW	C	A	72	2	YES	
	265/50R19	110	Y	XL	8	8 1/2J	277	749	340	BSW	C	A	71	2	YES	
20	255/40R20	101	Y	XL	8	9J	260	712	340	BSW	E	A	72	2	YES	
	255/45R20	105	Y	XL	8	8 1/2J	255	738	340	BSW	C	A	71	2	YES	
	255/50R20	109	Y	XL	8	8J	265	764	340	BSW	B	A	71	2	YES	
	255/55R20	110	Y	XL	8	8J	265	788	340	BSW	C	A	72	2	YES	
	265/50R20	111	Y	XL	8	8 1/2J	277	774	340	BSW	C	A	71	2	YES	
	275/35R20	102	W	XL	8	9 1/2J	278	700	340	BSW	E	A	71	2	YES	
	275/55R20	117	W	XL	8	8 1/2J	284	810	340	BSW	C	A	71	2	YES	
	275/60R20	119	V	XL	8	8J	279	838	340	BSW	C	A	71	2	YES	
	285/40R20	104	Y		8	10J	290	736	300	BSW	E	A	73	2	YES	
	285/50R20	116	W	XL	8	9J	297	794	340	BSW	C	A	73	2	YES	
21	295/35R20	105	Y	XL	8	10 1/2J	301	714	340	BSW	E	A	73	2	YES	
	275/45R21	110	Y	XL	8	9J	273	781	340	BSW	C	A	71	2	YES	
	22	285/45R22	114	W	XL	8	9 1/2J	285	815	340	BSW	C	A	73	2	YES
		305/40R22	114	W	XL	8	11J	313	803	340	BSW	C	A	73	2	YES
	305/45R22	118	W	XL	8	10J	303	833	340	BSW	C	A	73	2	YES	

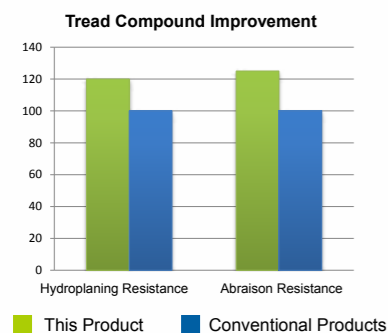
1inch=25.4mm | 1kPa=0.142psi | 1KG=2.2 lbs | XL Extra Load | LI Load Index | SS Speed Symbol



**RXQUEST**

# H/T01

SUMMER-SUV HT



Optimized High Performance urban on and off-road pattern suitable for Light Trucks and SUVs with excellent endurance and low noise generation.

■ **Handling**

A ladder-like structure at the bottom of the grooves connects the blocks on both sides. This design increases tread strength, improves handling, and efficiently reduces stone retention.



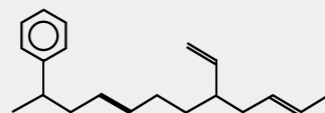
■ **Quiet**

The precision spacing of tread blocks, angles, and dense small grooves efficiently reduce noise.

■ **Off-Road**

The optimal combination of wide grooves and specially designed tread blocks greatly improves sport properties and driving comfort off-road.

Employs a specialised rubber compound solution to improve hydroplaning resistance and improve heat dissipation.



Rim	Size	LI	SR	XL	Tread Depth	Standard RIM	Section Width	Overall Diameter	Pressure	SW	RR	WG	NG Db	NG	Rim Protection
					mm	inch	mm	mm	kPa						
14	205/75R14	95	S		9.5	5 1/2J	203	664	300	WR	E	E	71	2	
	215/75R14	100	S		9.5	6J	216	678	300	WR	E	C	71	2	
	205/70R15	96	T		9	6J	209	669	300	WR	E	E	71	2	
	205/75R15	97	T		9.5	5 1/2J	203	689	300	WR	E	C	71	2	
	215/70R15	98	T		9	6 1/2J	221	683	300	WR	E	C	71	2	
15	215/75R15	100	S		9.2	6J	216	703	300	BSW	E	B	71	2	
	215/75R15	100	T		9.2	6J	216	703	300	BSW	E	B	71	2	
	215/75R15	100	T		9.2	6J	216	703	300	WR	E	C	71	2	
	225/70R15	100	T		9	6 1/2J	228	697	300	BSW	E	C	71	2	
	225/70R15	100	T		9	6 1/2J	228	697	300	WR	E	C	71	2	
	225/75R15	102	T		9.2	6J	223	719	300	BSW	E	C	71	2	
	225/75R15	102	T		9.2	6J	223	719	300	WR	E	C	71	2	
	235/75R15	105	S		9.5	6 1/2J	235	733	300	BSW	E	E	71	2	
	235/75R15	105	T		9.5	6 1/2J	235	733	300	BSW	E	E	71	2	
	235/75R15	105	T		9.5	6 1/2J	235	733	300	WR	E	E	71	2	
16	215/65R16	98	T		9	6 1/2J	221	686	300	BSW	E	C	71	2	
	215/65R16	98	H		9	6 1/2J	221	686	300	BSW			TBD		
	215/70R16	100	T		9	6 1/2J	221	708	300	BSW	E	C	71	2	
	215/70R16	100	H		9	6 1/2J	221	708	300	BSW			TBD		
	225/70R16	103	T		9	6 1/2J	228	722	300	BSW	E	C	71	2	
	235/70R16	106	T		9	7J	240	736	300	BSW	C	C	71	2	
	245/70R16	111	T	XL	9	7J	248	750	340	BSW	C	C	72	2	
	255/70R16	111	T		9	7 1/2J	260	764	300	BSW	C	C	72	2	
	265/70R16	112	S		9	8J	272	778	300	BSW	C	C	72	2	
	17	215/60R17	96	H		9	6 1/2J	221	690	300	BSW	E	C	71	2
225/65R17		102	S		9.2	6 1/2J	228	724	300	BSW	E	E	71	2	
225/65R17		102	H		9.2	6 1/2J	228	724	300	BSW	E	E	71	2	
225/65R17		106	H	XL	9.2	6 1/2J	228	724	340	BSW	E	E	71	2	
235/65R17		104	S		9	7J	240	738	300	BSW	E	C	71	2	
235/65R17		104	V		9	7J	240	738	300	BSW			TBD		
235/65R17		108	V	XL	9	7J	240	738	340	BSW			TBD		
235/65R17		104	H		9	7J	240	738	300	BSW	E	C	71	2	
245/65R17		107	S		9	7J	248	750	300	BSW	C	C	71	2	
245/65R17		111	T	XL	9	7J	248	750	340	BSW	C	C	71	2	
18	265/65R17	112	S		9	8J	272	776	300	BSW	C	C	72	2	
	265/65R17	112	T		9	8J	272	776	300	BSW	C	C	72	2	
	265/70R17	115	T		9	8J	272	804	300	BSW	C	C	72	2	
	235/60R18	107	H	XL	9	7J	240	739	340	BSW	C	C	72	2	
	265/65R18	114	H		9	8J	272	801	300	BSW	C	C	72	2	YES

1inch=25.4mm | 1kPa=0.142psi | 1KG=2.2 lbs | XL Extra Load | LI Load Index | SS Speed Symbol





**High Performance**

Light Truck and SUV tyre with excellent endurance and handling.



■ **Safety**

The tread pattern grooves built into the crown are designed to effectively drain water and offer great traction on wet roads to enhance overall safety.

■ **Tread Wear**

The tread is composed of a special formula made specifically to increase wear resistance.

■ **Comfort**

A varying pitch tread block design provides a comfortable and quiet ride.

■ **Handling**

The asymmetric tread pattern improves handling and braking on wet and dry roads.



Rim	Size	LI	SR	XL	Tread Depth	Standard RIM	Section Width	Overall Diameter	Pressure	SW	RR	WG	NG Db	NG	Rim Protection
					mm	inch									
15	255/70R15	108	T		9	7 1/2J	260	739	300	BSW	C	C	72	2	YES
	265/70R15	112	T		9	8J	272	753	300	BSW	C	C	72	2	YES
16	275/70R16	114	H		8.8	8J	279	792	300	BSW	C	C	72	2	YES
17	225/60R17	99	H		9	6 1/2J	228	702	300	BSW	C	C	71	2	YES
	235/60R17	102	H		9	7J	240	714	300	BSW	C	C	71	2	YES
	235/65R17	104	H		9	7J	240	738	300	BSW	C	C	71	2	YES
	245/70R17	110	T		9	7J	248	776	300	BSW	C	C	71	2	YES
	255/60R17	106	H		8.8	7 1/2J	260	738	300	BSW	C	C	72	2	YES
	255/65R17	110	H		9	7 1/2J	260	764	300	BSW	C	C	72	2	YES
	275/65R17	115	H		9	8J	279	790	300	BSW	C	C	72	2	YES
18	285/65R17	116	H		9	8 1/2J	292	802	300	BSW	C	C	72	2	YES
	225/60R18	100	H		8.8	6 1/2J	228	727	300	BSW	C	C	71	2	YES
	235/55R18	104	V	XL	8	7 1/2J	245	715	340	BSW	C	C	72	2	YES
	235/60R18	107	V	XL	9	7J	240	739	340	BSW	C	C	72	2	YES
	245/60R18	105	H		9	7J	248	751	300	BSW	C	C	71	2	YES
	255/55R18	105	V		8.6	8J	265	737	300	BSW	C	C	72	2	YES
	265/60R18	110	H		9	8J	272	775	300	BSW	C	C	72	2	YES
19	265/70R18	116	T		9	8J	272	829	300	BSW	C	C	72	2	YES
	235/55R19	101	V		8	7 1/2J	245	741	300	BSW	C	C	71	2	YES
	235/55R19	105	V	XL	8	7 1/2J	245	741	340	BSW	C	C	71	2	YES
	255/50R19	103	V		8.6	8J	265	739	300	BSW	C	C	72	2	YES
20	225/35R20	90	W	XL	8.6	8J	230	666	340	BSW	C	C	71	2	YES
	245/45R20	103	W	XL	8.6	8J	243	728	340	BSW	C	C	72	2	YES
	275/55R20	113	H		8	8 1/2J	284	810	300	BSW	C	C	72	2	YES
	275/60R20	115	S		8.8	8J	279	838	300	BSW	C	C	72	2	YES
22	275/40ZR22	107	Y	XL	8	9 1/2J	278	779	340	BSW	B	C	72	2	YES

1inch=25.4mm 1kPa=0.142psi 1KG=2.2 lbs XL Extra Load LI Load Index SS Speed Symbol



**RXQUEST**

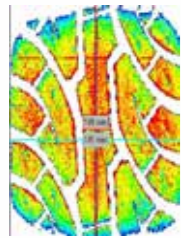
**A/T**

**SUMMER-SUV AT**

WEAR RESISTANCE CROSS-COUNTRY PUNCTURE RESISTANT RESILIENT



All-Terrain tyre for pickups, vans, and SUVs. Great traction on wet and muddy terrain, excellent handling, and outstanding driving comfort on both urban off-road and poorly-paved terrain.



**Contour Design**

The new contour design improves carcass strength to ensure superior carrying capacity, and at the same time enables uniform contact pressure distribution for even tread wear.



■ **Wet Performance**

Wide grooves within the tread effectively drain water from the tyre for greater performance in wet weather conditions.

■ **Handling Performance**

Reinforced central rib enhances maneuverability and high-speed driving performance.

■ **Specially Designed Tread**

The wide all-terrain tread pattern contains large blocks and wide grooves for superior driving capability on both on and off-road conditions.



Rim	Size	LI	SR	XL	Tread Depth	Standard RIM	Section Width	Overall Diameter	Pressure	SW	RR	WG	NG Db	NG	Rim Protection
					mm	inch	mm	mm	kPa						
15	31x10.50R15LT	109	R		13	8 1/2J	268	775	350	OWL	E	B	72	2	
	LT215/75R15	100/97	R		12	6J	216	703	350	OWL	E	B	72	2	
	LT235/75R15	104/101	R		13	6 1/2J	235	733	350	OWL	E	B	72	2	
	LT235/75R15	110/107	R		13	6 1/2J	235	733	450	OWL			TBD		
16	LT215/85R16	115/112	R		12.5	6J	216	772	550	OWL	E	B	72	2	
	LT225/70R16	102/99	R		12.5	6 1/2J	228	722	350	OWL	E	B	72	2	
	LT225/75R16	115/112	R		13	6J	223	744	550	OWL	E	B	72	2	
	LT235/70R16	104/101	T		12	7J	240	736	350	OWL			TBD		
	LT235/85R16	120/116	R		13	6 1/2J	235	806	550	OWL	C	B	72	2	
	LT245/75R16	120/116	S		13	7J	248	774	550	OWL	C	B	72	2	
	LT265/70R16	110/107	R		13	8J	272	778	350	OWL	E	E	72	2	
	LT265/70R16	110/107	R		13	8J	272	778	350	BSW			TBD		
LT265/70R16	117/114	R		13	8J	272	778	450	OWL			TBD			

1inch=25.4mm	1kPa=0.142psi	1KG=2.2 lbs	XL Extra Load	LI Load Index	SS Speed Symbol
SBL: Serrated Black Letter			OWL: Outlined White Letter		





Staggered shoulder blocks improve traction and climbing capability.



**Safety**

The shield pattern which extends from the sidewall protects the sidewall from abrasions and increase traction on mud roads. The carcass is designed with three layers of polyester fabric to make it rugged and resistant to strong impacts.

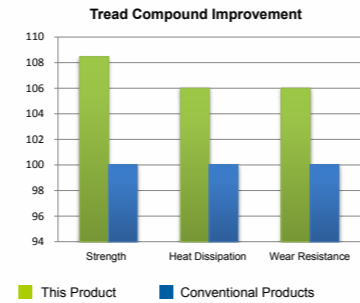


■ **Grooves**

Deepened grooves allow mud to easily be discharged from the tread at both high and low speeds. The design also offers better grip when traveling on rocky or rugged roads.

■ **Shoulder Design**

Large blocks on the shoulder vastly enhance handling on muddy and rock roads.



Rim	Size	LI	SR	XL	Tread Depth	Standard RIM	Section Width	Overall Diameter	Pressure	SW	RR	WG	NG Db	NG	Rim Protection
					mm	inch	mm	mm	kPa						
15	30x9.50R15LT	104	Q		15.3	7 1/2J	240	756	350	OWL		POR			YES
	31x10.50R15LT	109	Q		15.3	8 1/2J	268	781	350	OWL		POR			YES
	33x12.50R15LT	108	Q		15.3	10J	318	832	250	OWL		POR			YES
	35x12.50R15LT	113	Q		15.3	10J	318	883	250	OWL		POR			YES
	LT235/75R15	104/101	Q		15.3	6 1/2J	235	739	350	OWL		POR			YES
16	LT235/85R16	120/116	Q		15.3	6 1/2J	235	812	550	OWL		POR			YES
	LT245/75R16	120/116	Q		15.3	7J	248	774	550	OWL		POR			YES
	33x12.50R17LT	114	Q		16.3	10J	318	832	350	OWL		POR			YES
17	35x12.50R17LT	121	Q		16.3	10J	318	883	450	OWL		POR			YES
	LT265/70R17	121/118	Q		15.5	8J	272	810	550	OWL		POR			YES
	LT285/70R17	121/118	Q		15.5	8 1/2J	292	838	550	OWL		POR			YES
	33x12.50R18LT	118	Q		16.3	10J	318	832	450	BSW		POR			YES
18	35x12.50R18LT	123	K		16.7	10J	318	883	450	BSW		POR			YES
	35x12.50R18LT	123	Q		16.7	10J	318	883	450	BSW		POR			YES
	33x12.50R20LT	114	Q		16.3	10J	318	832	450	BSW		POR			YES
20	35x12.50R20LT	121	Q		16.3	10J	318	883	450	BSW		POR			YES
	LT305/55R20	121/118	Q		16.3	9 1/2J	316	850	450	BSW		POR			YES

1inch=25.4mm	1kPa=0.142psi	1KG=2.2 lbs	XL Extra Load	LI Load Index	SS Speed Symbol
OWL Outline White Letter					



WEST HAM UNITED GLOBAL TYRE PARTNER

High strength capabilities (puncture and scratch resistant)

High wear resistance and braking capabilities

Uses a specialized rubber compound to create a more balanced tyre with strong grip.



Specially designed tyre developed for **cross-country enthusiasts**

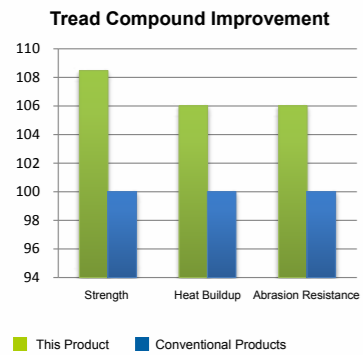


**RXQUEST**

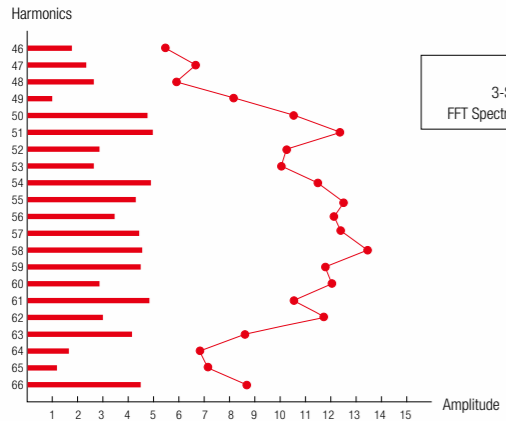
**CO2**

**SUMMER-VAN**

WEAR RESISTANCE HANDING PUNCTURE RESISTANT RESILIENT

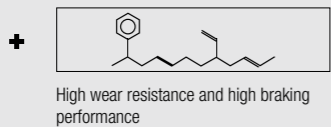
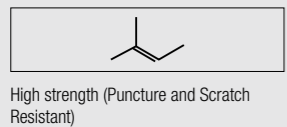


Specially designed pattern for commercial light trucks, minivans, and minibuses that offers outstanding handling on wet surfaces as well as excellent high speed durability.



**Tread Pattern**  
Original pattern design ensures excellent performance and greater driving comfort on wet and dry roads.

**Driving Comfort**  
The tread has a varied pitch design created to reduce noise and allow for a better driving experience.



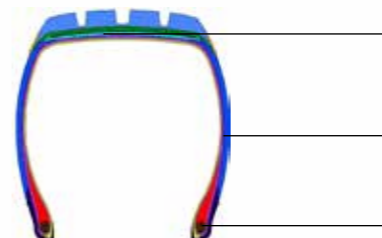
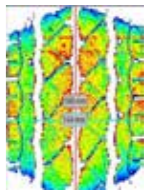
Use of specialized rubber compounds achieves a balance of strength and braking performance.

- Tread Design**  
Wider and deeper grooves increase wear resistance, efficiently drain water, and provide greater handling and stability.
- Tyre Structure**  
The reinforced carcass allows for greater load bearing capabilities.



**Contour Design**

The new tyre profile improves contact shape for a strengthened carcass. This strengthened carcass then provides improved carrying capacity.



- Nylon cap strips wound in the belt cover the entire shoulder for improved durability to resist irregular wear.
- Strengthened double carcass design improve the sidewall's impact resistance.
- Sturdy bead apex structure and design support the tyre load to improve braking.

Rim	Size	LI	SR	XL	Tread Depth	Standard RIM	Section Width	Overall Diameter	Pressure	SW	RR	WG	NG Db	NG	Rim Protection
					mm	inch	mm	mm	kPa						
12	145R12C	80/78	P		8	4.00B	145	537	350	BSW	E	B	72	2	
	145R12C	86/84	P		8	4.00B	145	537	450	BSW	E	B	72	2	
	155R12C	83/81	P		8	4.50B	157	550	350	BSW	E	B	72	2	
	155R12C	88/86	P		8	4.50B	157	550	450	BSW	E	B	72	2	

1inch=25.4mm | 1kPa=0.142psi | 1KG=2.2 lbs | XL Extra Load | LI Load Index | SS Speed Symbol





**WEST HAM UNITED GLOBAL TYRE PARTNER**

Rim	Size	LI	SR	XL	Tread Depth	Standard RIM	Section Width	Overall Diameter	Pressure	SW	RR	WG	NG Db	NG	Rim Protection
					mm	inch	mm	mm	kPa						
13	155R13C	85/83	Q		8	4.50B	157	578	350	BSW	E	B	72	2	
	165/70R13C	88/86	Q		8	5.00B	170	562	375	BSW	E	B	72	2	
	165R13C	94/93	S		7.6	4.50B	167	596	450	BSW	E	B	72	2	
	175R13C	97/95	S		8	5.00B	177	610	450	BSW	E	B	72	2	
14	175/65R14C	90/88	T		8	5J	177	584	375	BSW	E	B	72	2	
	175/70R14C	95/93	Q		8	5J	177	602	375	BSW	E	B	72	2	
	175R14C	99/98	Q		9	5J	178	634	450	BSW	E	B	72	2	
	185R14C	102/100	Q		9	5 1/2J	188	650	450	BSW	C	B	72	2	
	195R14C	106/104	Q		9	5 1/2J	198	666	450	BSW	C	B	72	2	
	195R14C	106/104	Q		9	5 1/2J	198	666	450	WR	C	B	72	2	
	205/75R14C	109/107	Q		9	5 1/2J	203	664	475	WR	C	B	72	2	
	205R14C	109/107	R		9	6J	208	686	450	BSW	C	B	72	2	
15	185R15C	103/102	R		9.4	5 1/2J	188	674	450	BSW	C	B	72	2	
	195/70R15C	104/102	R		10	6J	201	655	450	BSW	C	B	72	2	
	195R15C	106/104	R		9	5 1/2J	198	690	450	BSW	C	B	72	2	
	195R15C	106/104	R		9	5 1/2J	198	690	450	WR	C	B	72	2	
	205/65R15C	102/100	R		9	6J	209	647	375	BSW	C	B	72	2	
	205/70R15C	106/104	R		9	6J	209	669	450	BSW	C	B	72	2	
	215/70R15C	109/107	S		10	6 1/2J	221	683	450	BSW	C	B	72	2	
	215R15C	109/107	R		10	6J	218	725	450	WR	C	B	72	2	
225/70R15C	112/110	R		9	6 1/2J	228	697	450	BSW	C	B	72	2		

Rim	Size	LI	SR	XL	Tread Depth	Standard RIM	Section Width	Overall Diameter	Pressure	SW	RR	WG	NG Db	NG	Rim Protection
					mm	inch	mm	mm	kPa						
16	175R16C	101/99	R		9	5J	178	684	450	BSW	E	B	72	2	
	185/75R16C	104/102	R		9	5J	184	684	475	BSW	C	B	72	2	
	195/60R16C	99/97	T		9	6J	201	640	375	BSW	C	B	72	2	
	195/60R16C	99/97	H		9	6J	201	640	375	BSW	C	B	72	2	
	195/65R16C	104/102	R		9.4	6J	201	660	475	BSW	C	B	72	2	
	195/75R16C	107/105	R		10	5 1/2J	196	698	475	BSW	C	B	72	2	
	205/65R16C	107/105	R		9	6J	209	672	475	BSW	C	B	72	2	
	205/75R16C	110/108	R		9	5 1/2J	203	714	475	BSW	C	B	72	2	
	205R16C	110/108	R		9	6J	208	736	450	BSW	C	B	72	2	
	215/60R16C	103/101	T		9	6 1/2J	221	664	375	BSW	C	B	72	2	
	215/65R16C	109/107	R		9	6 1/2J	221	686	475	BSW	C	B	72	2	
	215/70R16C	108/106	Q		9	6 1/2J	221	708	375	BSW	C	B	72	2	
17	215/75R16C	116/114	R		10.5	6J	216	728	525	BSW	C	B	72	2	
	225/65R16C	112/110	R		9	6 1/2J	228	698	475	BSW	C	B	72	2	
	225/75R16C	121/120	R		9	6J	223	744	575	BSW	C	B	72	2	
	235/65R16C	115/113	R		9	7J	240	712	475	BSW	C	B	72	2	
	235/65R16C	121/119	R		9	7J	240	712	575	BSW	C	B	72	2	
	285/65R16C	125	R		9	8 1/2J	292	776	475	BSW			TBD		
	285/65R16C	128	R		9	8 1/2J	292	776	525	BSW	B	B	72	2	
	225/70R17C	112/110	R		9	6 1/2J	228	748	375	BSW	C	B	72	2	

1inch=25.4mm	1kPa=0.142psi	1KG=2.2 lbs	WR White Ring	LI Load Index	SS Speed Symbol
BSW Black Sidewall					





Rim	Size	LI	SR	XL	Tread Depth	Standard RIM	Section Width	Overall Diameter	Pressure	SW	RR	WG	NG Db	NG	Rim Protection
					mm	inch	mm	mm							
13	155/65R13	73	T		8.5	4.50B	157	532	300	BSW	F	E	71	2	
	155/70R13	75	T		8.5	4.50B	157	548	300	BSW	F	E	71	2	
	165/70R13	79	T		8.5	5.00B	170	562	300	BSW	F	E	71	2	
	165/70R13	83	T	XL	8.5	5.00B	170	562	340	BSW	F	E	71	2	
	175/70R13	82	T		8.5	5.00B	177	576	300	BSW	F	E	71	2	
14	165/65R14	79	T		8.5	5J	170	570	300	BSW	F	E	71	2	
	165/70R14	81	T		8.5	5J	170	588	300	BSW	F	E	71	2	
	165/70R14	85	T	XL	8.5	5J	170	588	340	BSW	E	E	71	2	
	175/65R14	82	H		8.7	5J	177	584	300	BSW	F	E	71	2	
	175/65R14	86	T	XL	8.7	5J	177	584	340	BSW	E	E	71	2	
	175/70R14	84	T		8.5	5J	177	602	300	BSW	E	E	71	2	
	175/70R14	88	T	XL	8.2	5J	177	602	340	BSW	E	E	71	2	
	185/60R14	82	T		8.5	5 1/2J	189	578	300	BSW	F	E	71	2	
	185/60R14	82	H		8.5	5 1/2J	189	578	300	BSW	F	E	71	2	
	185/65R14	86	T		8.7	5 1/2J	189	596	300	BSW	E	E	71	2	
	185/65R14	86	H		8.7	5 1/2J	189	596	300	BSW	E	E	71	2	
	185/70R14	92	T	XL	8.7	5 1/2J	189	616	340	BSW	E	E	71	2	
	185/70R14	88	H		8.7	5 1/2J	189	616	300	BSW	E	E	71	2	
	195/60R14	86	T		8.5	6J	201	590	300	BSW	E	E	72	2	
	195/70R14	91	H		8.7	6J	201	630	300	BSW	E	E	72	2	
	195/70R14	95	T	XL	8.7	6J	201	630	340	BSW	E	E	72	2	
	205/70R14	98	T	XL	8.7	6J	209	644	340	BSW	E	C	72	2	
205/70R14	98	H	XL	8.7	6J	209	644	300	BSW	E	C	72	2		
15	175/65R15	84	H		8.7	5J	177	609	300	BSW	E	E	71	2	
	175/65R15	88	H	XL	8.7	5J	177	609	340	BSW	E	E	71	2	
	185/55R15	86	H	XL	8.5	6J	194	585	340	BSW	E	E	71	2	
	185/60R15	88	H	XL	8.5	5 1/2J	189	603	340	BSW	E	E	71	2	
	185/60R15	88	T	XL	8.5	5 1/2J	189	603	340	BSW	E	E	71	2	
	185/60R15	84	H		8.5	5 1/2J	189	603	300	BSW	E	E	71	2	
	185/65R15	88	T		8.7	5 1/2J	189	621	300	BSW	E	E	71	2	
	185/65R15	92	T	XL	8.7	5 1/2J	189	621	340	BSW	E	E	71	2	
	185/65R15	88	H		8.7	5 1/2J	189	621	300	BSW	E	E	71	2	
	185/65R15	92	H	XL	8.7	5 1/2J	189	621	340	BSW	E	E	71	2	
	195/50R15	86	H	XL	8.5	6J	201	577	340	BSW	E	E	72	2	YES

1inch=25.4mm | 1kPa=0.142psi | 1KG=2.2 lbs | XL Extra Load | LI Load Index | SS Speed Symbol

## STRONG GRIP AND EXCELLENT HANDLING ON SNOW AND ICE

SPECIAL RUBBER COMPOUND AND NUMEROUS SIPES HELP MAINTAIN TREAD SOFTNESS

### SPECIAL TREAD COMPOUND

Special silica tread formula helps the tyre remain soft in low temperatures for stable driving and braking capabilities.

### FUEL EFFICIENT

The special tread compound reduces rolling resistance for better fuel efficiency.

### Tread Pattern

A reinforced center rib improves handling and high speed performance while the multiple sipes enhance grip and braking capabilities on snow and ice.

### Safety

Zigzagged grooves improve the tyre's self-cleaning capabilities for a safer drive on snow and ice.

Rim	Size	LI	SR	XL	Tread Depth	Standard RIM	Section Width	Overall Diameter	Pressure	SW	RR	WG	NG Db	NG	Rim Protection
					mm	inch	mm	mm							
15	195/50R15	86	V	XL	8.5	6J	201	577	340	BSW	E	E	72	2	YES
	195/55R15	85	H		8.5	6J	201	595	300	BSW	E	E	72	2	YES
	195/60R15	88	T		8.5	6J	201	615	300	BSW	E	E	72	2	YES
	195/60R15	88	H		8.5	6J	201	615	300	BSW	E	E	72	2	YES
	195/65R15	91	T		8.7	6J	201	635	300	BSW	E	E	72	2	
	195/65R15	95	T	XL	8.7	6J	201	635	340	BSW	E	E	72	2	
	195/65R15	91	H		8.7	6J	201	635	300	BSW	E	E	72	2	
	205/60R15	91	H		8.7	6J	209	627	300	BSW	E	C	72	2	YES
	205/65R15	94	H		8.5	6J	209	647	300	BSW	E	C	72	2	
	215/65R15	96	H		8.5	6 1/2J	221	661	300	BSW	E	C	72	2	YES
	195/45R16	84	H	XL	8.5	6 1/2J	195	582	340	BSW	E	E	72	2	YES
	195/55R16	87	H		8.5	6J	201	620	300	BSW	E	E	72	2	YES
	195/55R16	87	V		8.5	6J	201	620	300	BSW	E	E	72	2	YES
	205/45R16	87	H	XL	8.7	7J	206	590	340	BSW	E	C	72	2	YES
	205/45R16	87	V	XL	8.7	7J	206	590	340	BSW	F	C	72	2	YES
16	205/50R16	87	H		8.7	6 1/2J	214	612	300	BSW	E	C	72	2	YES
	205/55R16	91	H		8.5	6 1/2J	214	632	300	BSW	E	C	72	2	YES
	205/55R16	94	H	XL	8.5	6 1/2J	214	632	340	BSW	E	C	72	2	YES
	205/55R16	94	V	XL	8.5	6 1/2J	214	632	340	BSW	E	C	72	2	YES
	205/60R16	96	H	XL	8.7	6J	209	652	340	BSW	E	C	72	2	YES
	205/65R16	95	H		8.8	6J	209	672	300	BSW	E	C	72	2	YES
	215/55R16	97	H	XL	8.7	7J	226	642	340	BSW	E	C	72	2	YES
	215/55R16	97	V	XL	8.7	7J	226	642	340	BSW	E	C	72	2	YES
	215/60R16	99	H	XL	8.7	6 1/2J	221	664	340	BSW	E	C	72	2	
	215/65R16	98	H		8.8	6 1/2J	221	686	300	BSW	E	C	72	2	
	225/55R16	99	H	XL	8.7	7J	233	654	340	BSW	E	C	72	2	YES
	225/60R16	98	H		8.7	6 1/2J	228	676	300	BSW	E	C	72	2	YES
245/70R16	107	T		8.7	7J	248	750	300	BSW	E	C	72	2		



**RXFROST**

**WU01**

WINTER-UHP-STUDLESS



Winter tread formulation for excellent driving performance on ice and snow. Wider tread increases road contact for greater safety.



■ **Safety**

The tread is able to maintain softness in low temperatures to ensure passenger safety while serrated sipes improve tyre grip on ice and snow.

■ **Braking**

The tyre pattern's deep and densely distributed grooves enhance braking capabilities.

■ **Handling**

The three main pattern grooves provide great handling in extreme winter weather conditions by draining snow and ice.

■ **Groove Design**

The serrated design on the sides of the main grooves help the tyre better grip on ice and snow.



Rim	Size	LI	SR	XL	Tread Depth	Standard RIM	Section Width	Overall Diameter	Pressure	SW	RR	WG	NG Db	NG	Rim Protection
					mm	inch	mm	mm	kPa						
14	185/60R14	82	T		9.2	5 1/2J	189	578	300	BSW	E	E	71	2	YES
	195/65R15	95	T	XL	9.2	6J	201	635	340	BSW	E	C	72	2	YES
15	205/65R15	94	H		9.2	6J	209	647	300	BSW	E	C	72	2	YES
	205/55R16	91	H		9.5	6 1/2J	214	632	300	BSW	E	C	72	2	YES
16	215/55R16	97	H	XL	9.5	7J	226	642	340	BSW	E	C	72	2	YES
	215/60R16	99	H	XL	9.5	6 1/2J	221	664	340	BSW	E	C	72	2	YES
	215/65R16	98	H		9.5	6 1/2J	221	686	300	BSW	E	C	72	2	YES
	225/55R16	99	H	XL	9.5	7J	233	654	340	BSW	E	C	72	2	YES
	225/60R16	98	H		9.5	6 1/2J	228	676	300	BSW	E	C	72	2	YES
	225/55R16	98	H		9.5	6 1/2J	228	676	300	BSW	E	C	72	2	YES
17	205/45R17	88	H	XL	9.5	7J	206	616	340	BSW	F	C	72	2	YES
	205/45R17	88	V	XL	9.5	7J	206	616	340	BSW	E	C	72	2	YES
	205/50R17	89	H		9.5	6 1/2J	214	638	300	BSW	E	C	72	2	YES
	205/50R17	89	V		9.5	6 1/2J	214	638	300	BSW	E	C	72	2	YES
	205/55R17	95	H	XL	9.5	6 1/2J	214	658	340	BSW	E	C	72	2	YES
	215/45R17	87	H		9.5	7J	213	626	300	BSW	E	C	72	2	YES
	215/45R17	87	V		9.5	7J	213	626	300	BSW	E	C	72	2	YES
	215/55R17	94	H		9.5	7J	226	668	300	BSW	E	C	72	2	YES
	215/55R17	94	V		9.5	7J	226	668	300	BSW	E	C	72	2	YES
	225/45R17	91	H		9.5	7 1/2J	225	634	300	BSW	E	C	72	2	YES
	225/45R17	91	V		9.5	7 1/2J	225	634	300	BSW	E	C	72	2	YES
	225/50R17	98	H	XL	9.5	7J	233	658	340	BSW	E	C	72	2	YES
	225/50R17	98	V	XL	9.5	7J	233	658	340	BSW	E	C	72	2	YES
	225/55R17	97	H		9.5	7J	233	680	300	BSW	E	C	72	2	YES
225/55R17	97	V		9.5	7J	233	680	300	BSW	E	C	72	2	YES	
225/65R17	102	S		9.5	6 1/2J	228	724	300	BSW	E	C	72	2	YES	
225/65R17	102	T		9.5	6 1/2J	228	724	300	BSW	E	C	72	2	YES	
235/45R17	94	H		9.5	8J	236	644	300	BSW	E	C	72	2	YES	
235/45R17	94	V		9.5	8J	236	644	300	BSW	E	C	72	2	YES	
235/55R17	99	H		9.5	7 1/2J	245	690	300	BSW	E	C	72	2	YES	
235/65R17	104	S		9.5	7J	240	738	300	BSW	E	C	72	2	YES	
265/65R17	112	S		9.5	8J	272	776	300	BSW	C	C	72	2	YES	
18	215/55R18	99	H	XL	9.5	7J	226	693	340	BSW	E	C	72	2	YES
	225/40R18	92	H	XL	9.5	8J	230	637	340	BSW	E	C	72	2	YES
	235/40R18	95	V	XL	8.8	8 1/2J	241	645	340	BSW	E	C	72	2	YES
	235/45R18	98	H	XL	9.5	8J	236	669	340	BSW	E	C	72	2	YES
	235/55R18	104	H	XL	9.5	7 1/2J	245	715	340	BSW	E	C	72	2	YES
	245/40R18	97	H	XL	9.5	8 1/2J	248	653	340	BSW	E	C	72	2	YES
	245/45R18	100	H	XL	9.5	8J	243	677	340	BSW	E	C	72	2	YES
	255/55R18	109	H	XL	9.5	8J	265	737	340	BSW	C	C	72	2	YES
19	225/40R19	93	V	XL	8.8	8J	230	663	340	BSW	E	C	72	2	YES
	245/40R19	98	H	XL	9.5	8 1/2J	248	679	340	BSW	E	C	72	2	YES
	245/55R19	103	V		9.5	7 1/2J	253	753	300	BSW	E	C	72	2	YES
	245/55R19	103	H		9.5	7 1/2J	253	753	300	BSW	E	C	72	2	YES
	255/35R19	96	H	XL	9.5	9J	260	661	340	BSW	E	C	72	2	YES
	255/40R19	100	V	XL	8.8	9J	260	687	340	BSW	E	C	72	2	YES
	255/50R19	107	H	XL	9.5	8J	265	739	340	BSW	C	C	73	2	YES
20	275/35R19	100	H	XL	9.5	9 1/2J	278	675	340	BSW	C	C	73	2	YES
	275/40R20	106	V	XL	8.8	9 1/2J	278	728	340	BSW	B	C	73	2	YES
	275/45R20	110	V	XL	8.8	9J	273	756	340	BSW	C	C	73	2	YES
21	295/35R21	107	V	XL	8.8	10 1/2J	301	739	340	BSW	C	C	74	2	YES

1inch=25.4mm 1kPa=0.142psi 1KG=2.2 lbs XL Extra Load LI Load Index SS Speed Symbol



**RXFROST**

**WH02**

WINTER-HP-STUDDABLE



The newly developed WH02 is a studdable winter tyre for your car or SUV. The trinity pattern design is constructed and made up of a compound that enhances driving safety and performance in extreme winter weather conditions.



**■ Safety**

The tread compound helps the tyre maintain softness in low temperatures to improve driving safety.

**■ Tread Pattern**

The varied arrangement of studs, grooves, and sipes improve grip on ice and snow.

**■ Braking**

The tread pattern utilizes four main grooves which aid in effectively discharging ice and snow out of the tyre. Each groove has a jagged design which allows for superior braking power on both ice and snow.



**Widened Driving Surface and Improved Crown Arc**

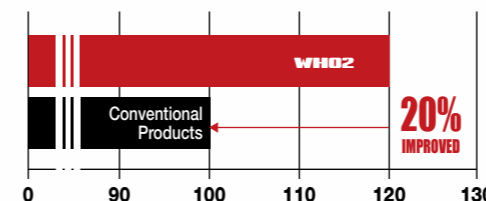
The larger contact area provides a more stable ride and improves skidding resistance which increases overall driving safety.



**ROADX TYRE**

WEST HAM UNITED GLOBAL TYRE PARTNER

**Tyre Anti-Skid Capabilities**



**Skidding Resistance ■**

Driving safety is increased on ice and snow due to the right-angle design of the shoulder which improves skidding resistance.

**Stability ■**

Added 3D design in the shoulder increases the tyre's grip when in deep snow and improves traction performance and ground stability.



Rim	Size	LI	SR	XL	Tread Depth	Standard RIM	Section Width	Overall Diameter	Pressure	SW	RR	WG	NG Db	NG	Rim Protection
					mm	inch	mm	mm	kPa						
13	175/70R13	82	T		9.9	5.00B	177	576	300	BSW	E	F	71	2	
14	175/65R14	82	H		9.9	5J	177	584	300	BSW	E	F	71	2	
	175/70R14	88	T	XL	9.9	5J	177	602	340	BSW	E	F	71	2	
	185/65R14	86	T		9.9	5 1/2J	189	596	300	BSW	E	F	71	2	
	185/70R14	92	T	XL	9.9	5 1/2J	189	616	340	BSW	E	F	71	2	
15	185/65R15	88	T		9.9	5 1/2J	189	621	300	BSW	E	F	71	2	
	195/60R15	88	T		9.9	6J	201	615	300	BSW	E	F	72	2	
	195/65R15	91	T		9.9	6J	201	635	300	BSW	C	F	72	2	
	205/65R15	94	H		9.9	6J	209	647	300	BSW	C	F	72	2	
16	205/70R15	96	T		9.9	6J	209	669	300	BSW	C	F	72	2	
	205/55R16	91	H		9.9	6 1/2J	214	632	300	BSW	C	F	72	2	YES
	205/60R16	96	H	XL	9.9	6J	209	652	340	BSW	C	F	72	2	
	215/60R16	99	H	XL	9.9	6 1/2J	221	664	340	BSW	C	F	72	2	
17	215/65R16	98	H		9.9	6 1/2J	221	686	300	BSW	C	F	72	2	
	215/70R16	100	S		9.9	6 1/2J	221	708	300	BSW	C	F	72	2	
	215/50R17	91	T		9.9	7J	226	648	300	BSW	C	F	72	2	YES
	215/60R17	96	S		9.9	6 1/2J	221	690	300	BSW	C	F	72	2	
17	225/65R17	102	S		9.9	6 1/2J	228	724	300	BSW	C	F	72	2	
	235/65R17	104	S		9.9	7J	240	738	300	BSW	C	F	72	2	
	265/65R17	112	S		9.9	8J	272	776	300	BSW	C	F	73	2	

STUD SIZE TSMI#12

1inch=25.4mm 1kPa=0.142psi 1KG=2.2 lbs XL Extra Load LI Load Index SS Speed Symbol



**RXFROST**

**WH12**

WINTER-HP-STUDDABLE



The **WH12** is a studdable winter tyre designed for drivers that demand maximum traction in severe winter weather conditions, letting you outperform the elements to get more out of the winter season.

- Green technology: Extensive use of environmentally friendly materials that meet European REACH requirements.
- Specially formulated tread compound allows the tread rubber to maintain flexibility for exceptional performance in extreme cold temperatures. Improved safety and handling in winter weather conditions (indicated with the Severe Service Emblem).
- Specially blended tread rubber formula for excellent grip in low temperatures.



**V-shaped Tread Design**

Improved grip on ice and snow, skid resistance, and effectively reduces noise emissions.

**Sipe Design**

Optimized sipe design ensures greater grip on ice and snow.

**Improved Studded Technology**

12 rows of studs are designed to maximize grip and traction performance for safer driving in winter weather.

**Sipe Design**

Optimized depth and length of sipes maintain tread rigidity and greatly enhances grip and handling.



SUMMER

WINTER

ALL SEASON



**Special Buffer Layer**

Special rubber buffer layer at the bottom of the stud absorbs the impact force of snow to prevent the falling out of studs.



**Innovative Square Design**

Increases the ground contact area of the tyre to effectively improve grip performance and increase skid resistance.



**Cold-Resistant Tread Rubber**

Tread formula compounds ensure the tyre maintains elasticity and softness in extreme cold weather conditions. This improves grip on ice and snow, improves hydroplaning resistance, and lowers rolling resistance.

**ANTI-SKID PROPERTY**



Rim	Size	LI	SR	XL	Tread Depth	Section Width	Overall Diameter	Pressure	SW	RR	WG	NG Db	NG	Rim Protection
					mm	mm	mm	kPa						
13	155/70R13	75	T		10	155	548	300	BSW	F	E	71	2	
	155/80R13	79	T		10	155	578	300	BSW	F	E	71	2	
	165/70R13	79	T		10	165	562	300	BSW	F	E	71	2	
	175/70R13	82	T		10	175	576	300	BSW	F	E	71	2	
14	155/65R14	75	T		10	155	558	300	BSW	F	E	71	2	
	165/65R14	79	T		10	165	570	300	BSW	F	E	71	2	
	175/65R14	82	T		10	175	584	300	BSW	F	E	71	2	
	175/70R14	84	T		10	175	602	300	BSW	F	E	71	2	
	185/60R14	82	T		10	185	578	300	BSW	F	E	71	2	
	185/65R14	86	T		10	185	596	300	BSW	F	E	71	2	
	185/70R14	88	T		10	185	616	300	BSW	F	E	71	2	

1inch=25.4mm | 1kPa=0.142psi | 1KG=2.2 lbs | XL Extra Load | LI Load Index | SS Speed Symbol



**RXFROST**

**WH12**

WINTER-HP-STUDDABLE



Rim	Size	LI	SR	XL	Tread Depth	Section Width	Overall Diameter	Pressure	SW	RR	WG	NG Db	NG	Rim Protection	
					mm	mm	mm	kPa							
15	175/65R15	84	T		10	175	609	300	BSW	F	E	71	2		
	185/55R15	82	T		10	185	585	300	BSW	F	E	71	2		
	185/60R15	84	T		10	185	603	300	BSW	F	E	71	2		
	185/65R15	88	T		10	185	621	300	BSW	E	E	71	2		
	195/60R15	88	T		10	195	615	300	BSW	E	E	72	2		
	195/65R15	91	T		10	195	635	300	BSW	E	E	72	2		
	205/65R15	94	T		10	205	647	300	BSW	E	E	72	2		
	205/70R15	96	T		10	205	669	300	BSW	E	E	72	2		
	215/65R15	96	T		10	215	661	300	BSW	E	E	72	2		
	215/70R15	98	T		10	215	683	300	BSW	E	E	72	2		
	235/75R15	105	S		11	235	733	300	BSW	C	E	72	2		
	16	205/50R16	87	T		10	205	612	300	BSW	E	E	72	2	
		205/55R16	91	T		10	205	632	300	BSW	E	E	72	2	
		205/60R16	92	T		10	205	652	300	BSW	E	E	72	2	
205/65R16		95	T		10	205	672	300	BSW	E	E	72	2		
215/55R16		97	H	XL	10	215	642	340	BSW	E	E	72	2		
215/60R16		95	T		10	215	664	300	BSW	E	E	72	2		
215/65R16		98	T		10	215	686	300	BSW	E	E	72	2		
215/70R16		100	T		11	215	708	300	BSW	E	E	72	2		
225/60R16		98	T		10	225	676	300	BSW	E	E	72	2		
225/65R16		100	T		10	225	698	300	BSW	E	E	72	2		
225/70R16		103	H		11	225	722	300	BSW	E	E	72	2		
235/70R16		106	T		11	235	736	300	BSW	C	E	72	2		
245/70R16		107	T		11	245	750	300	BSW	C	E	72	2		
245/75R16		111	S		11	245	774	300	BSW	C	E	72	2		

Rim	Size	LI	SR	XL	Tread Depth	Section Width	Overall Diameter	Pressure	SW	RR	WG	NG Db	NG	Rim Protection
					mm	mm	mm	kPa						
17	215/45R17	91	T	XL	10	215	626	340	BSW	E	E	72	2	
	215/50R17	95	T	XL	10	215	648	340	BSW	E	E	72	2	
	215/55R17	94	T		11	215	668	300	BSW	E	E	72	2	
	215/60R17	96	H		10	215	690	300	BSW	E	E	72	2	
	215/65R17	99	T		11	215	712	300	BSW	E	E	72	2	
	225/45R17	94	H	XL	10	225	634	340	BSW	E	E	72	2	
	225/50R17	98	H	XL	10	225	658	340	BSW	E	E	72	2	
	225/55R17	97	T		11	225	680	300	BSW	E	E	72	2	
	225/60R17	99	H		10	225	702	300	BSW	E	E	72	2	
	225/65R17	102	S		11	225	724	300	BSW	E	E	72	2	
	235/45R17	97	T	XL	10	235	644	340	BSW	E	E	72	2	
	235/55R17	99	V		10	235	690	300	BSW	E	E	72	2	
	235/60R17	102	H		10	235	714	300	BSW	E	E	72	2	
	235/65R17	104	T		11	235	738	300	BSW	C	E	72	2	
	245/65R17	107	T		11	245	750	300	BSW	C	E	72	2	
	265/65R17	112	T		11	265	776	300	BSW	C	E	73	2	
	265/70R17	115	S		11	265	804	300	BSW	C	E	73	2	
18	215/55R18	95	T		10	215	693	300	BSW	E	E	70	2	
	225/40R18	92	H	XL	10	225	637	340	BSW	E	E	70	2	
	225/45R18	95	T	XL	10	225	659	340	BSW	E	E	70	2	
	225/55R18	98	T		10	225	705	300	BSW	E	E	70	2	
	225/60R18	100	T		10	225	727	300	BSW	E	E	70	2	
	235/50R18	101	T	XL	10	235	693	340	BSW	E	E	70	2	
	235/55R18	100	H		11	235	715	300	BSW	E	E	70	2	
	235/60R18	103	H		10	235	739	300	BSW	E	E	70	2	
	245/45R18	100	H	XL	10	245	677	340	BSW	E	E	70	2	
	255/55R18	105	V		10	255	737	300	BSW	C	E	73	2	
19	235/55R19	101	H		10	235	741	300	BSW	E	E	72	2	
	255/50R19	107	H	XL	10	255	739	340	BSW	C	E	73	2	
20	275/40R20	106	H	XL	11	275	728	340	BSW	C	E	73	2	

1inch=25.4mm | 1kPa=0.142psi | 1KG=2.2 lbs | XL Extra Load | LI Load Index | SS Speed Symbol



**RXFROST**

**WH03**

WINTER-HP-STUDLESS



New sipe design elements greatly improve traction, handling, and stability for improved driving safety.



■ **Handling**

Tiny horizontal grooves absorb and store water that is dispersed on the surface of ice for better grip. The sipe design improves the tyre's rigidity to reduce tyre deformation, improve stability, and offer a more comfortable ride.

■ **Safety**

The groove design effectively discharges snow and mud for a safer ride.

■ **Grip**

The large block design and small grooves increase grip for more efficient traction and braking on ice.



Triple 3-D groove

■ **Skidding Resistance**

The 90 degree angled shoulder improves anti-skid performance to dramatically increase driving safety on ice and snow.

■ **Stability**

The J-like 3-D shoulder design provides better grip and stability.



Rim	Size	LI	SR	XL	Tread Depth	Standard RIM	Section Width	Overall Diameter	Pressure	SW	RR	WG	NG Db	NG	Rim Protection
					mm	inch	mm	mm	kPa						
13	155/65R13	73	T		8.5	4.50B	157	532	300	BSW	F	E	71	2	
	155/70R13	75	T		8.5	4.50B	157	548	300	BSW	F	E	71	2	
	165/70R13	83	T	XL	8.5	5.00B	170	562	340	BSW	E	E	71	2	
	175/70R13	82	T		8.5	5.00B	177	576	300	BSW	E	E	71	2	
14	165/70R14	85	T	XL	8.5	5J	170	588	340	BSW	E	E	71	2	
	175/65R14	82	H		8.5	5J	177	584	300	BSW	E	E	71	2	
	175/70R14	88	T	XL	8.5	5J	177	602	340	BSW	E	E	71	2	
	185/60R14	82	T		8.5	5 1/2J	189	578	300	BSW	E	E	71	2	
	185/65R14	86	T		8.5	5 1/2J	189	596	300	BSW	E	E	71	2	
	185/70R14	88	H		8.5	5 1/2J	189	616	300	BSW	E	E	71	2	
	195/60R14	86	T		8.5	6J	201	590	300	BSW	E	E	72	2	
	195/65R14	89	T		8.5	6J	201	610	300	BSW	C	E	72	2	
	195/70R14	91	H		8.5	6J	201	630	300	BSW	C	E	72	2	
	205/70R14	98	H	XL	8.5	6J	209	644	340	BSW	C	E	72	2	
15	185/55R15	86	H	XL	8.5	6J	194	585	340	BSW	E	E	71	2	YES
	185/60R15	88	H	XL	8.5	5 1/2J	189	603	340	BSW	E	E	71	2	
	185/65R15	88	T		8.5	5 1/2J	189	621	300	BSW	E	E	71	2	
	195/55R15	85	H		8.5	6J	201	595	300	BSW	E	E	72	2	YES
	195/60R15	88	T		8.5	6J	201	615	300	BSW	E	E	72	2	
	195/65R15	91	T		8.5	6J	201	635	300	BSW	C	E	72	2	
	205/65R15	94	H		8.5	6J	209	647	300	BSW	C	E	72	2	
	205/70R15	96	T		8.5	6J	209	669	300	BSW	C	E	72	2	
	215/65R15	96	H		8.5	6 1/2J	221	661	300	BSW	C	E	72	2	
	215/70R15	98	T		8.5	6 1/2J	221	683	300	BSW	C	E	72	2	
16	215/75R15	100	S		10.5	6J	216	703	300	BSW	C	E	72	2	
	235/75R15	109	S	XL	10.5	6 1/2J	235	733	340	BSW	C	C	72	2	
	205/55R16	91	H		8.5	6 1/2J	214	632	300	BSW	C	E	72	2	
	205/60R16	96	H	XL	8.5	6J	209	652	340	BSW	C	E	72	2	
	215/60R16	99	H	XL	8.5	6 1/2J	221	664	340	BSW	C	E	72	2	
	215/65R16	98	H		8.5	6 1/2J	221	686	300	BSW	C	E	72	2	
17	215/55R17	94	H		8.5	7J	226	668	300	BSW	C	E	72	2	YES
	235/45R17	94	H		8.5	8J	236	644	300	BSW	C	C	72	2	
18	235/60R18	107	T	XL	10.5	7J	240	739	340	BSW	C	C	72	2	

1inch=25.4mm | 1kPa=0.142psi | 1KG=2.2 lbs | XL Extra Load | LI Load Index | SS Speed Symbol



**RXFROST**

# WC01

WINTER-LTC-STUDLESS



**ROADX**  
TYRE

WEST HAM UNITED GLOBAL TYRE PARTNER



A winter tyre product specifically designed for commercial light trucks.



■ **Handling**

The wide and jagged groove design efficiently drains snow and water out of the tyre to improve handling in winter weather.

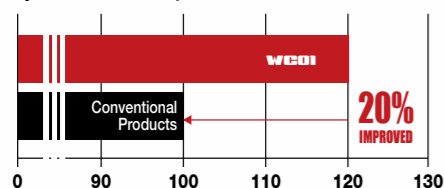
■ **Tread Design**

The intersecting blocks, grooves, and sipes allow for more effective braking on ice and snow.

■ **Grip**

The precision cut sipes enhance grip on ice and snow to allow for a safer driving experience.

Tyre Anti-Skid Capabilities



A mixture of compounds ensure the tyre is prepared for any winter weather conditions.

■ **Comfortable Drive**

The tread width and block patterns ensure a secure contact with the road surface to improve driving comfort.



Rim	Size	LI	SR	XL	Tread Depth	Standard RIM	Section Width	Overall Diameter	Pressure	SW	RR	WG	NG Db	NG	Rim Protection
					mm	inch	mm	mm	kPa						
12	155R12C	88/86	R		8.7	4.50B	157	550	450	BSW	E	C	71	2	
13	155R13C	85/83	R		8.7	4.50B	157	578	350	BSW	E	C	71	2	
14	185R14C	102/100	R		9.6	5 1/2J	188	650	450	BSW	E	C	71	2	
	195R14C	106/104	R		10	5 1/2J	198	666	450	BSW	E	C	71	2	
15	195/70R15C	104/102	S		10	6J	201	655	450	BSW	E	C	71	2	
	195R15C	106/104	R		10	5 1/2J	198	690	450	BSW	E	C	71	2	
	205/70R15C	106/104	S		10	6J	209	669	450	BSW	E	C	71	2	
	215/70R15C	113/111	S		10	6 1/2J	221	683	525	BSW	E	C	71	2	
	225/70R15C	112/110	S		10	6 1/2J	228	697	450	BSW	E	C	71	2	
16	185/75R16C	104/102	R		9.6	5J	184	684	475	BSW	E	C	71	2	
	195/60R16C	99/97	T		10.2	6J	201	640	375	BSW	C	C	71	2	
	195/65R16C	104/102	T		10	6J	201	660	475	BSW	E	C	71	2	
	195/75R16C	107/105	R		10	5 1/2J	196	698	475	BSW	C	C	71	2	
	205/65R16C	107/105	T		10	6J	209	672	475	BSW	E	C	71	2	
	205/75R16C	113/111	R		10	5 1/2J	203	714	525	BSW	C	C	71	2	
	215/60R16C	108/106	T		10	6 1/2J	221	664	475	BSW	E	C	71	2	
	215/65R16C	109/107	T		10	6 1/2J	221	686	475	BSW	E	C	71	2	
	215/75R16C	116/114	R		10	6J	216	728	525	BSW	E	C	71	2	
	225/65R16C	112/110	T		10	6 1/2J	228	698	475	BSW	E	C	71	2	
225/75R16C	118/116	R		10	6J	223	744	525	BSW	E	C	71	2		
235/65R16C	115/113	R		10.2	7J	240	712	475	BSW	E	E	71	2		
285/65R16C	128	N		10.2	8 1/2J	292	776	525	BSW	C	E	75	2		

1inch=25.4mm | 1kPa=0.142psi | 1KG=2.2 lbs | XL Extra Load | LI Load Index | SS Speed Symbol



**RXFROST**

**WCS01**

WINTER-LTC-STUDDABLE



The **WCS01** is a studdable winter tyre designed for drivers that demand maximum traction in severe winter weather conditions, letting you outperform the elements to get more out of the winter season.

- Green technology: Extensive use of environmentally friendly materials that meet European REACH requirements.
- Specially formulated tread compound allows the tread rubber to maintain flexibility for exceptional performance in extreme cold temperatures. Improved safety and handling in winter weather conditions (indicated with the Severe Service Emblem).
- Specially blended tread rubber formula for excellent grip in low temperatures.



**V-shaped Tread Design**  
Improved grip on ice and snow, skid resistance, and effectively reduces noise emissions.

**Sipe Design**  
Optimized sipe design ensures greater grip on ice and snow.

**Improved Studded Technology**  
12 rows of studs are designed to maximize grip and traction performance for safer driving in winter weather.

**Sipe Design**  
Optimized depth and length of sipes maintain tread rigidity and greatly enhances grip and handling.



SUMMER

WINTER

ALL SEASON



**Special Buffer Layer**

Special rubber buffer layer at the bottom of the stud absorbs the impact force of snow to prevent the falling out of studs.



**Innovative Square Design**

Increases the ground contact area of the tyre to effectively improve grip performance and increase skid resistance.



**Cold-Resistant Tread Rubber**

Tread formula compounds ensure the tyre maintains elasticity and softness in extreme cold weather conditions. This improves grip on ice and snow, improves hydroplaning resistance, and lowers rolling resistance.

**ANTI-SKID PROPERTY**



Rim	Size	LI	SR	XL	Tread Depth	Section Width	Overall Diameter	Pressure	SW	RR	WG	NG Db	NG	Rim Protection
					mm	mm	mm	kPa						
14	175/65R14C	90/88	Q		10	175	584	375	BSW	E	C	70	2	
	185R14C	102/100	Q		10	185	650	450	BSW	E	C	70	2	
15	195/70R15C	104/102	Q		10.5	195	655	450	BSW	E	C	70	2	
	205/70R15C	106/104	R		10.5	205	669	450	BSW	C	C	71	2	
	215/70R15C	109/107	R		10.5	215	683	450	BSW	C	C	72	2	
	225/70R15C	112/110	Q		10.5	225	697	450	BSW	C	C	72	2	
16	195/60R16C	99/97	S		10.5	195	640	375	BSW	E	C	70	2	
	195/65R16C	104/102	R		10.5	195	660	475	BSW	E	C	70	2	
	195/75R16C	107/105	Q		10.5	195	698	475	BSW	C	C	70	2	
	205/65R16C	107/105	Q		10.5	205	672	475	BSW	C	C	71	2	
	205/75R16C	110/108	R		10.5	205	714	475	BSW	C	C	71	2	
	215/65R16C	109/107	R		10.5	215	686	475	BSW	C	C	72	2	
	215/75R16C	113/111	R		10.5	215	728	475	BSW	C	C	72	2	
16	225/65R16C	112/110	R		10.5	225	698	475	BSW	C	C	73	2	
	235/65R16C	115/113	R		10.5	235	712	475	BSW	C	C	73	2	

1inch=25.4mm | 1kPa=0.142psi | 1KG=2.2 lbs | XL Extra Load | LI Load Index | SS Speed Symbol



# Tyre Basics

## 1. Increased Wear Resistance

Radial tyres employ heavy-duty steel wires which, when coupled with even ground contact, increases wear resistance, provides better braking capability, and is comfortable. The radial tyre's wear resistance life increases by 50-130% compared to the bias tyre. (Pic 1)

## 2. Fuel Economy

Radial tyres have a soft tyre carcass which allows for lower rolling resistance. Running the same number of revolutions as the bias, the traveling distance is longer. With a radial tyre there is little rolling resistance which saves about 20-25% of force and fuel consumption is lowered by 6-9%. (Pic 2)

## 3. Increased Maneuverability and Stability

Excellent grip force which increases maneuverability when turning. Radial tyres, at the same rotation angle as the bias tyres, have a smaller amount of torque which increasing maneuverability and stability. (Pic 3)

## 4. Low Heat Buildup and Cut Resistance

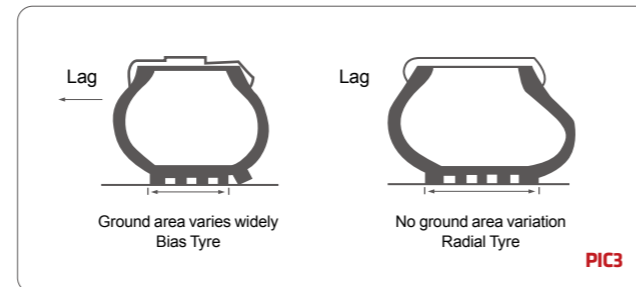
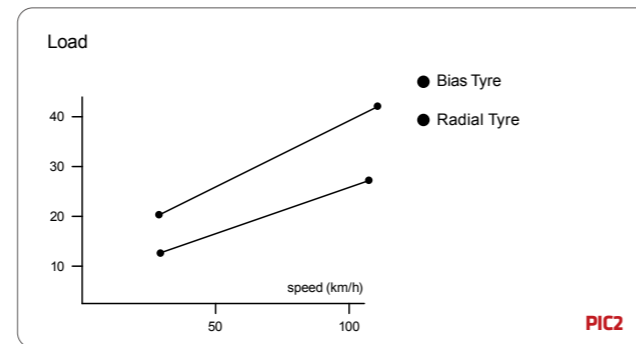
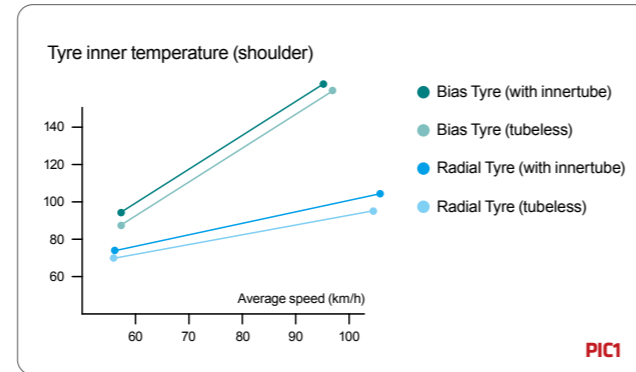
When traveling at 90 km/h, the tyre temperature is relative. The carcass uses a metal layer which has great heat dissipation so when driving, the friction on the inside of the tyre is low. While moving, the tread doesn't have to work as much which causes over shearing stress on the tyre. A radial tyre's heat buildup is 25% less than that of bias tyre. (Pic 4)

## 5. Better Braking

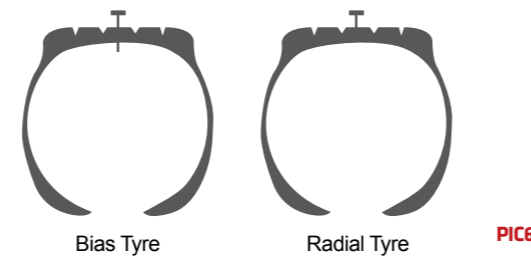
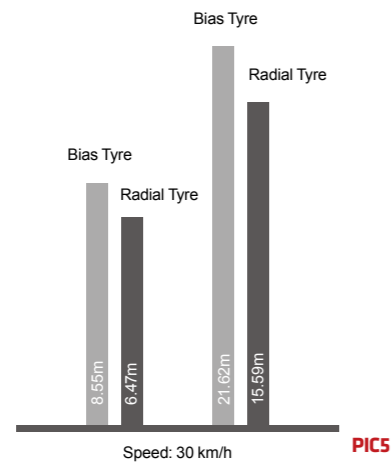
The tyre carcass uses a heavy-duty steel wire layer allowing for great braking performance on wet roads. The force of the grip for radial tyres is even better, therefore increasing braking efficiency. (Pic 5)

## 6. Stronger Puncture Resistance

Main reason for adding puncture resistance: rock, glass, nails, and miscellaneous road debris. The radial tyre steel tread is strong; the carcass uses a steel wire layer which gives greater protection from these items. (Pic 6)



Item	Radial Tyre	Bias Tyre
Inner Temperature	63°C	90°C
Shoulder Temperature	80°C	140°C



# Tyre Basics

UHPT (Ultra High Performance Tyre) is the shortened name for the best performance tyre. Its aspect ratio is less than 55 and has an inner diameter is 16" or higher.

## UHP tyre size label



**225 / 40 Z R 18 92 Y**

- 1 Normal Section Width
  - 2 Normal Aspect Ratio
  - 3 Speed Rating
  - 4 Radial Tyre
  - 5 Normal Rim Diameter
  - 6 Load Index
  - 7 Speed Rating
- Aspect Ratio (%) =  $\frac{\text{Section Height(H)}}{\text{Section Width(W)}} \times 100\%$
- Speed Rating: V ≤ 240 km/h, Z > 240 km/h, W ≤ 270 km/h, Y ≤ 300 km/h

## What is a UHP Tyre ?

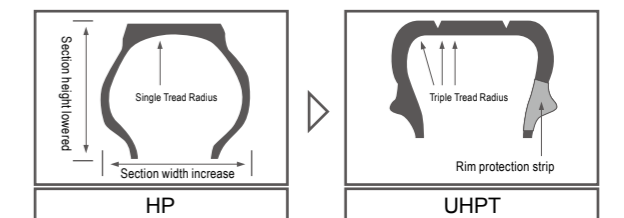
### 1. Pattern

Innovative tread design which uses a wide pattern block to improve maneuverability and offer stronger grip.



### 2. Structure

Section width increase: Wider contact area, increased lateral strength  
 Section height lowered: Tyre Sidewall strength increased  
 Rim protection strip: protects the rim, better looking









# **ROADX**



**ROADX**  
**TYRE**

WEST HAM UNITED GLOBAL TYRE PARTNER